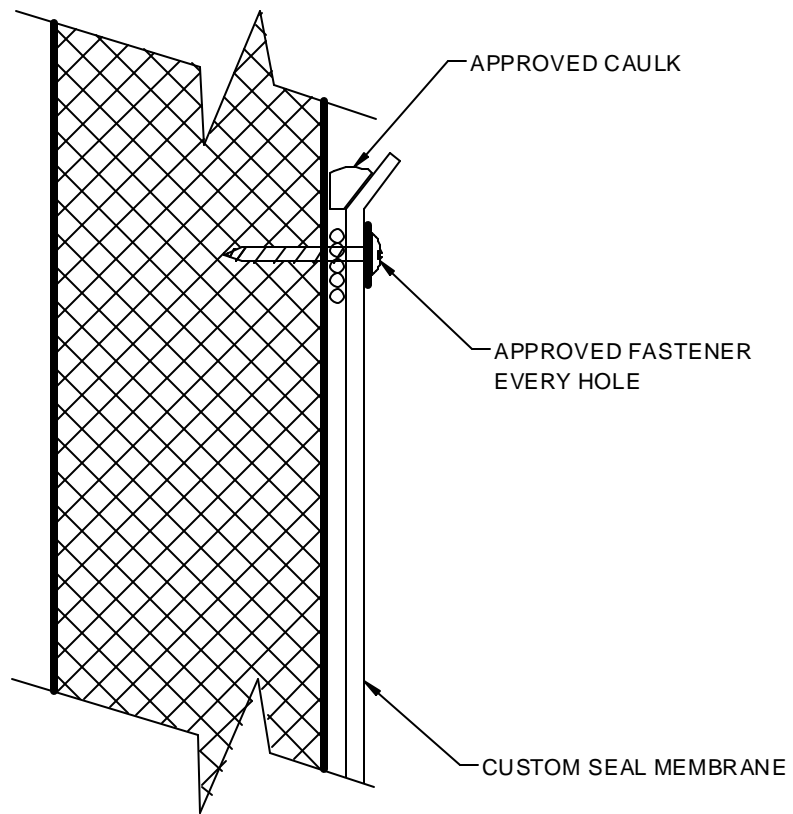


# Custom Seal (PVC) ROOFING DETAILS

DETAIL	PAGE
PVC-1.01	1
PVC-1.02	1
PVC-1.03	2
PVC-1.04	2
PVC-1.05	3
PVC-1.06	3
PVC-1.07	4
PVC-1.08	4
PVC-1.09	5
PVC-1.10	5
PVC-1.11	6
PVC-1.12	6
PVC-1.13	7
PVC-1.14	7
PVC-1.15	8
PVC-1.16	8
PVC-1.17	9
PVC-1.18	9
PVC-1.19	10
PVC-1.20	10
PVC-1.21	11
PVC-1.22	11
PVC-1.23	12
PVC-1.24	12
PVC-1.25	13
PVC-1.26	13
PVC-1.27	14
PVC-1.28	14
PVC-1.29	15
PVC-1.30	15
PVC-1.31	16
PVC-1.32	16
PVC-1.32a	17
PVC-1.32b	17
PVC-1.32c	18
PVC-1.32d	18
PVC-1.32e	19
PVC-1.33	20
PVC-1.34	20
PVC-1.35	21
PVC-1.36	21
PVC-1.37	22
PVC-1.38	22
PVC-1.39	23
PVC-1.40	23

PVC-1.41	Custom Seal Two Way Breather Vent .....	24
PVC-1.42	Prefabricated 12" or Larger Stack Flashing .....	24
PVC-1.43	Custom Seal Prefabricated Curb Flashing .....	25
PVC-1.44	Prefabricated Outside Corner .....	25
PVC-1.45	Prefabricated Outside Corner .....	26
PVC-1.46	Prefabricated Scupper View 1 .....	26
PVC-1.47	Prefabricated Scupper View 2 .....	27
PVC-1.48	Typical Factory Prefabricated Panel Detail .....	27
PVC-1.49	Typical Factory Prefabricated Panel Detail .....	28
PVC-1.50	12'6" Tab System or 24'6" Tab System .....	28
PVC-1.51	Custom Seal Membrane Re-Roof Over Standing Seam Metal Roof .....	29

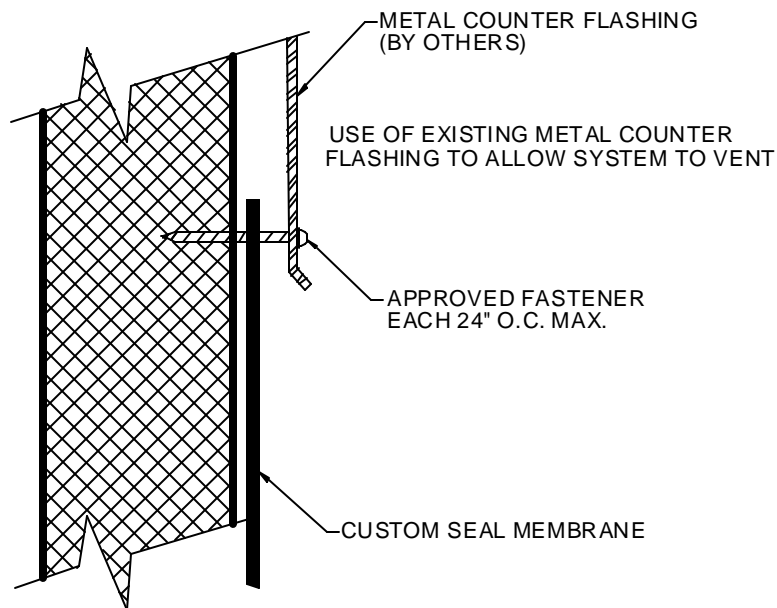


**Wall Termination W/ Term Bar**

**Detail #: PVC-1.01**

**(PVC) Systems**

1/03

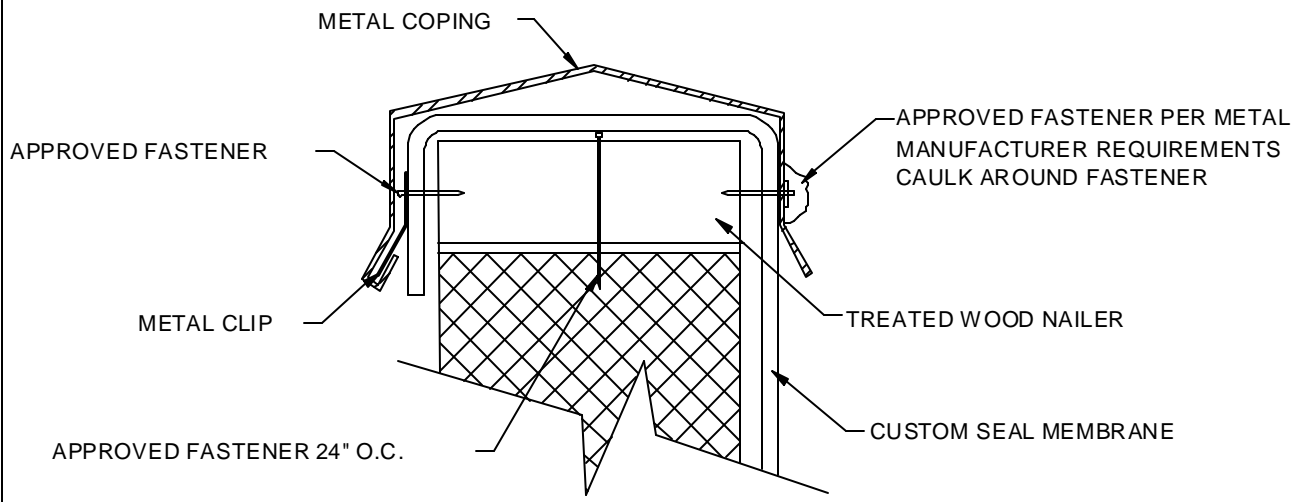


1/03

**Wall Termination W/ counter flashing**

**Detail #: PVC-1.02**

**(PVC) Systems**

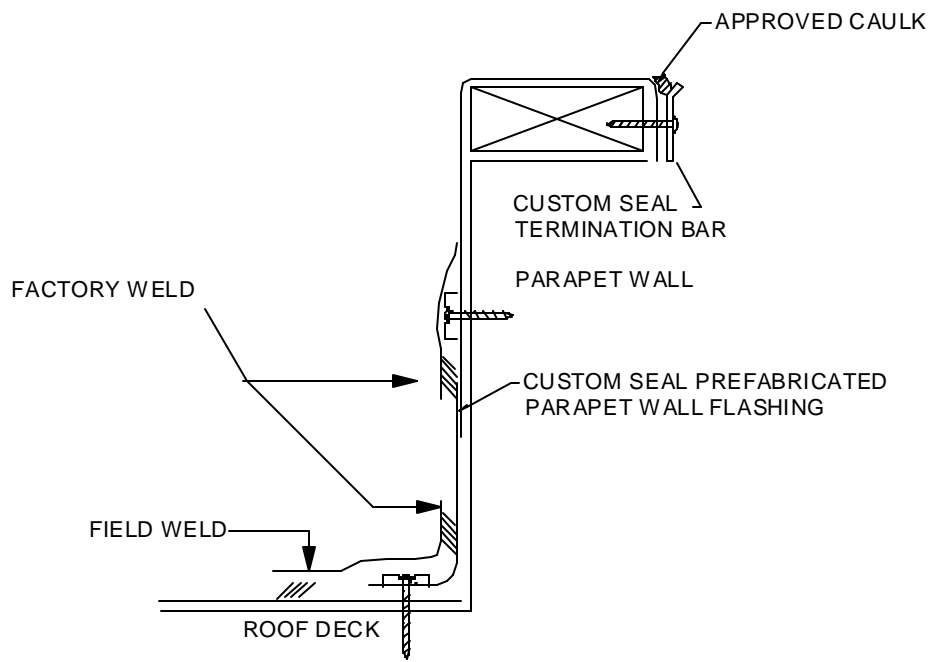


**Parapet Wall Coping Cap**

**Detail #: PVC-1.03**

**(PVC) Systems**

1/03

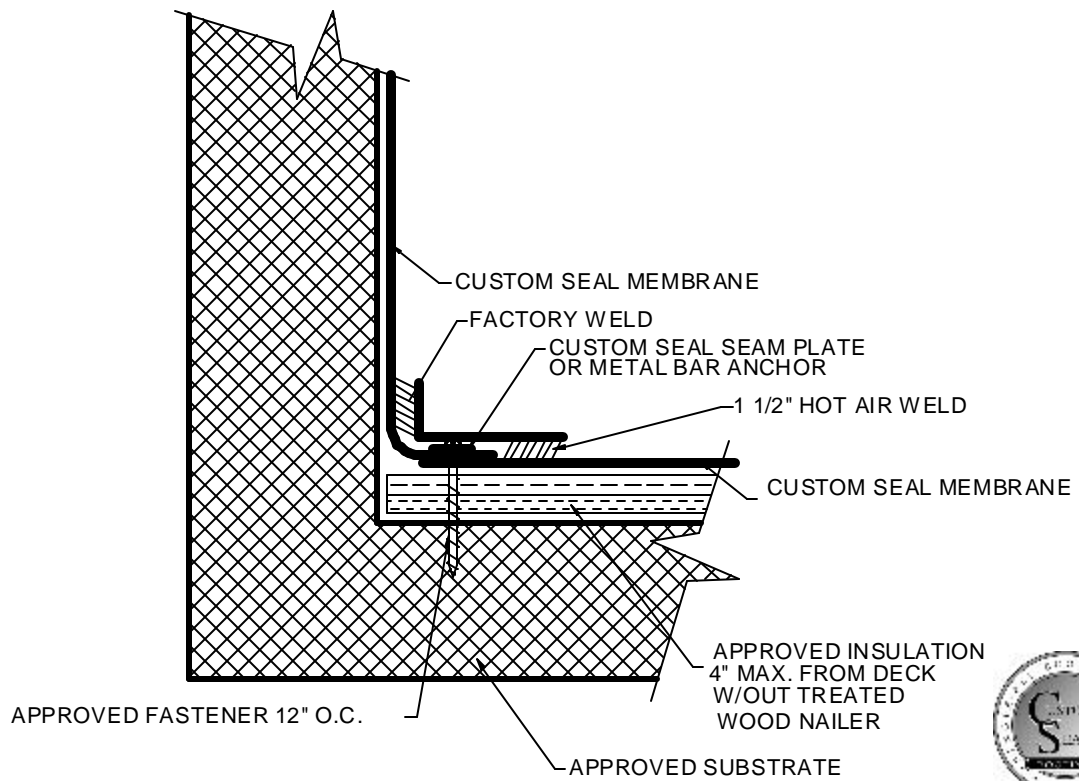


**Wall Termination W/ Term Bar and Wood Nailer**

**Detail #: PVC-1.04**

**(PVC) Systems**

1/03

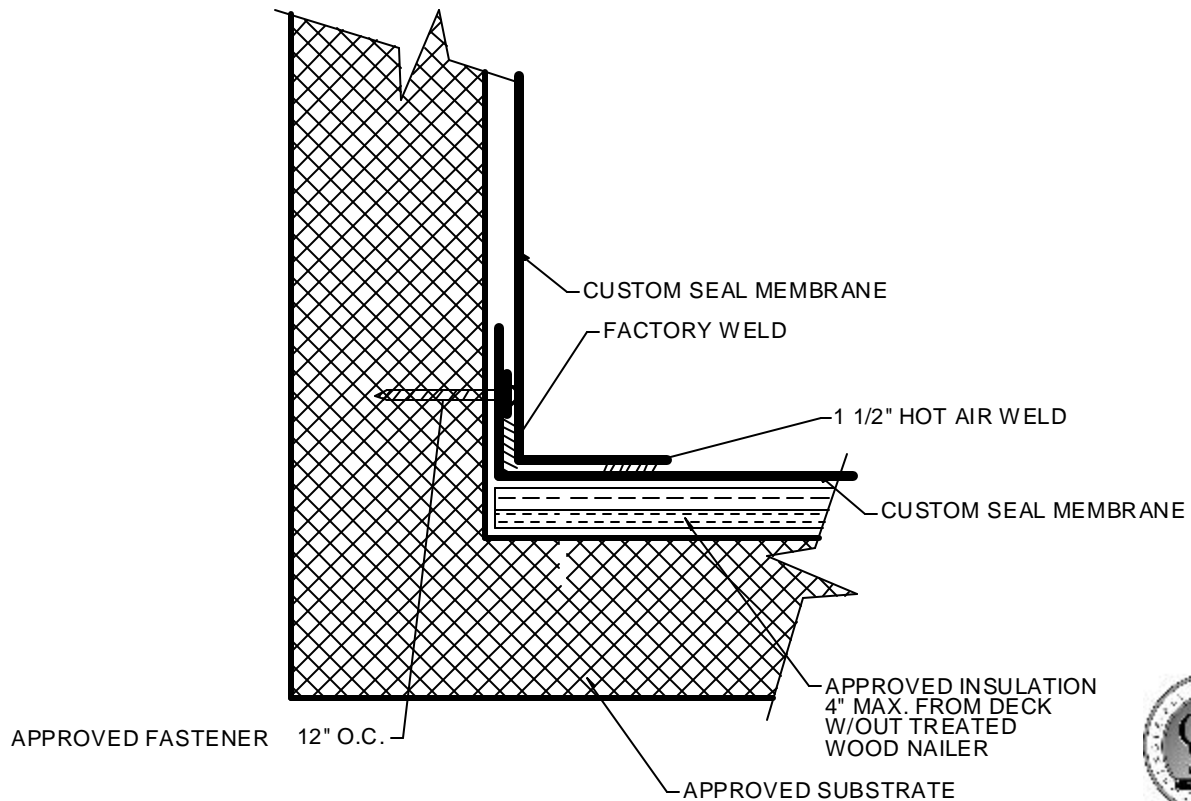


**Prefabricated Wall Base Flashing  
Factory Tab on Deck**

**Detail #: PVC-1.05**

**(PVC) Systems**

1/03

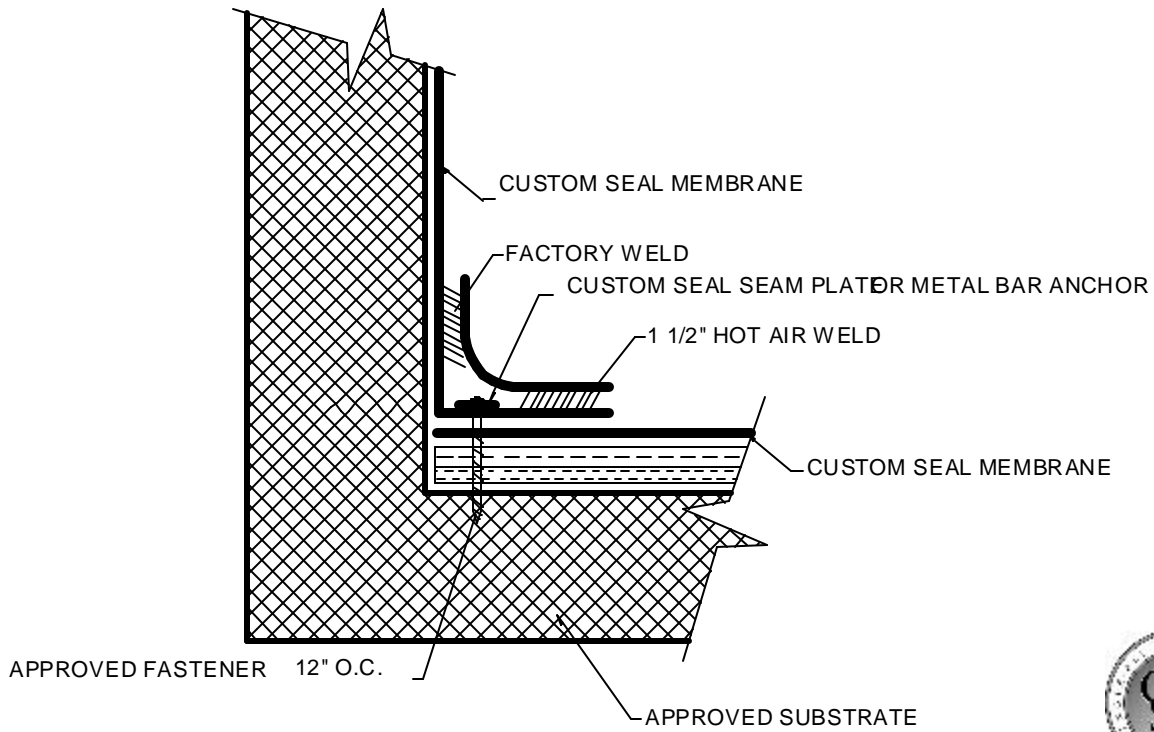


**Wall Base Flashing  
Factory Tab on Wall**

**Detail #: PVC-1.06**

**(PVC) Systems**

1/03

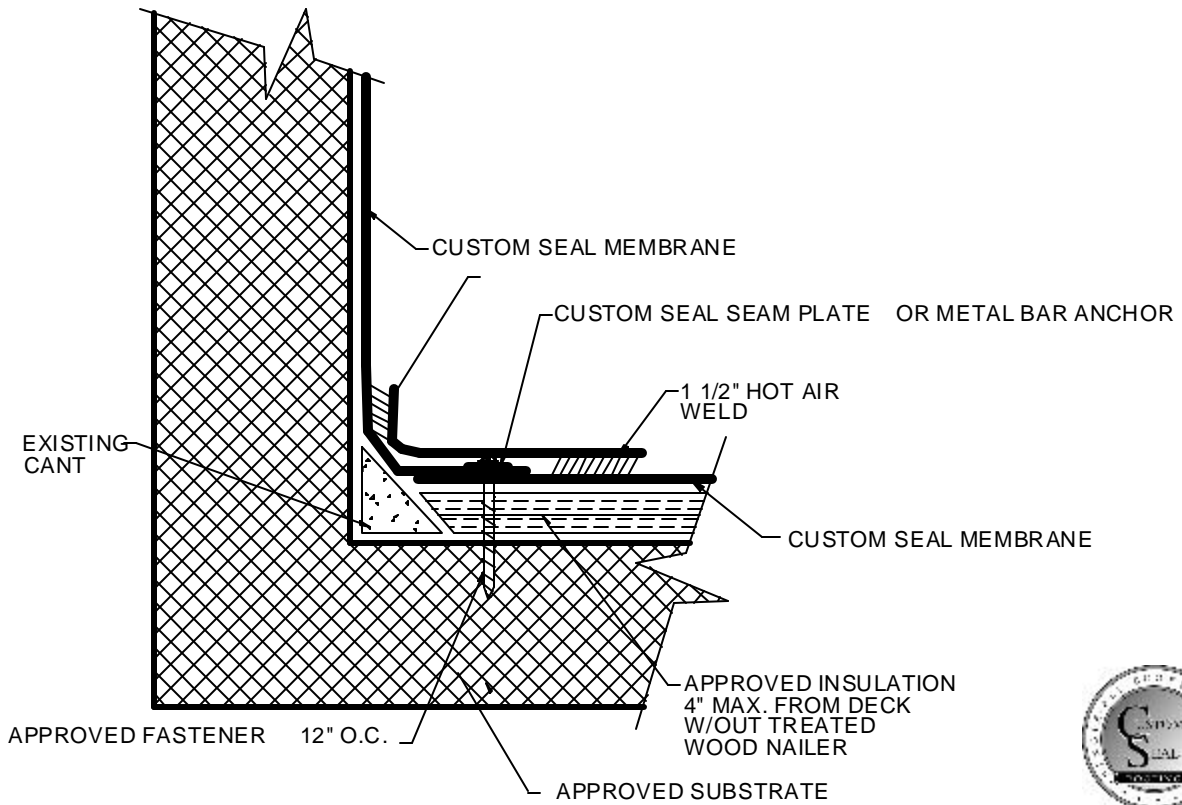


**Wall Base Flashing Tab on Deck**

**Detail #: PVC-1.07**

**(PVC) Systems**

1/03

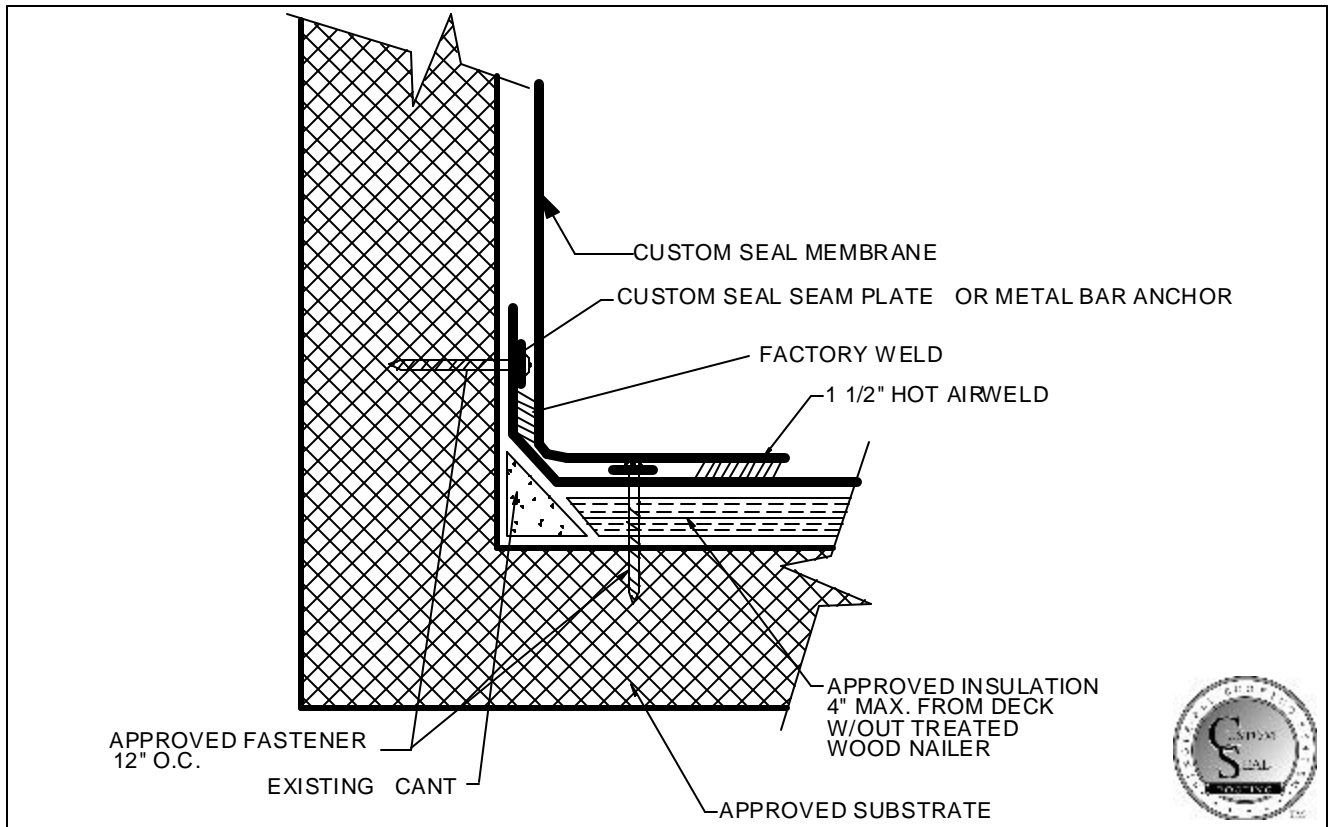


**Wall Base Flashing Existing Cant Tab on Deck**

**Detail #: PVC-1.08**

**(PVC) Systems**

1/03

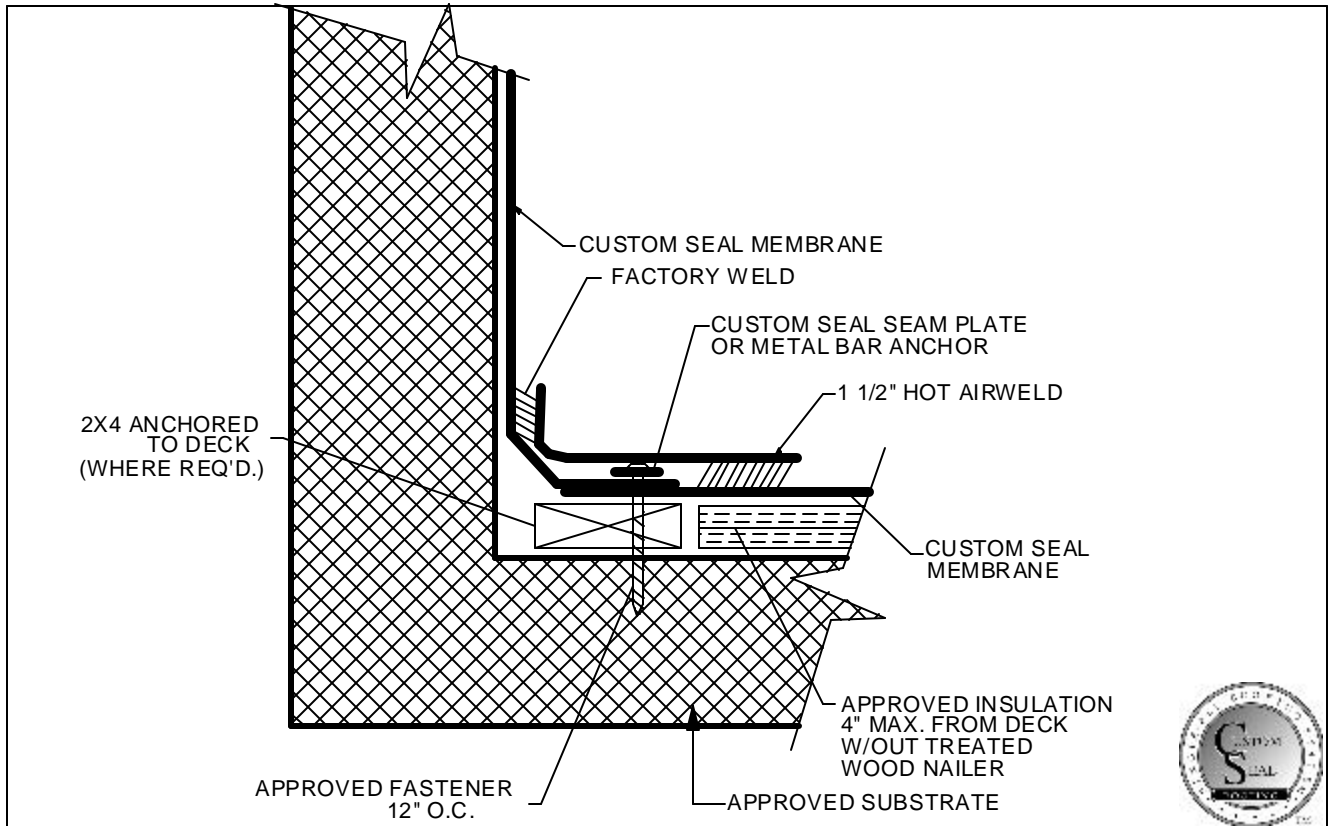


**Wall Base Flashing Existing  
Cant Tab On Wall**

**Detail #: PVC-1.09**

**(PVC) Systems**

1/03



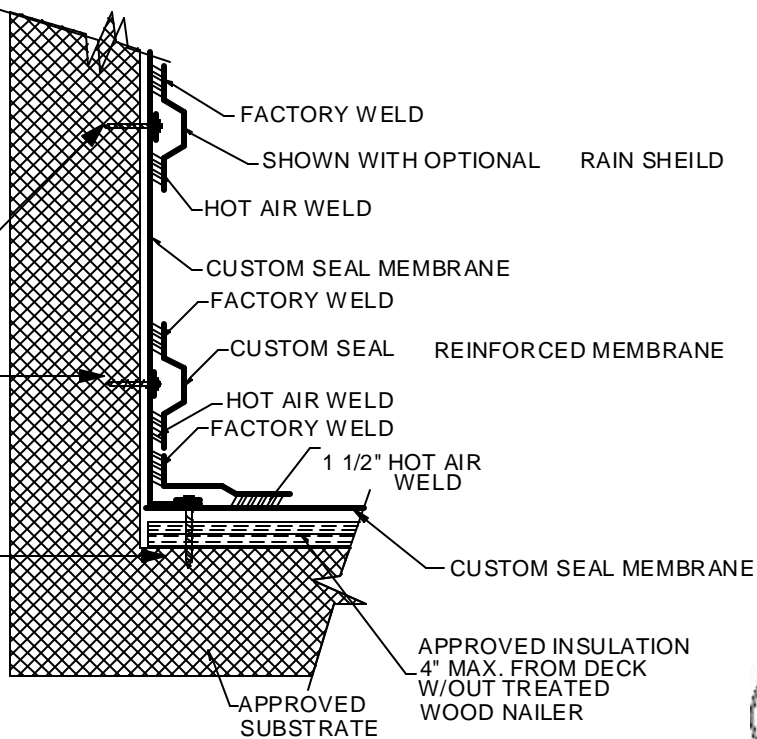
**Wall Base Flashing  
Wood Nailer**

**Detail #: PVC-1.10**

**(PVC) Systems**

1/03

CUSTOM SEAL SEAM PLATE  
OR METAL BAR ANCHOR  
W/APPROVED FASTENER  
12" O.C.



NOTE: FIRST PARAPET TAB MUST BE NO MORE THAN 24" FROM BASE



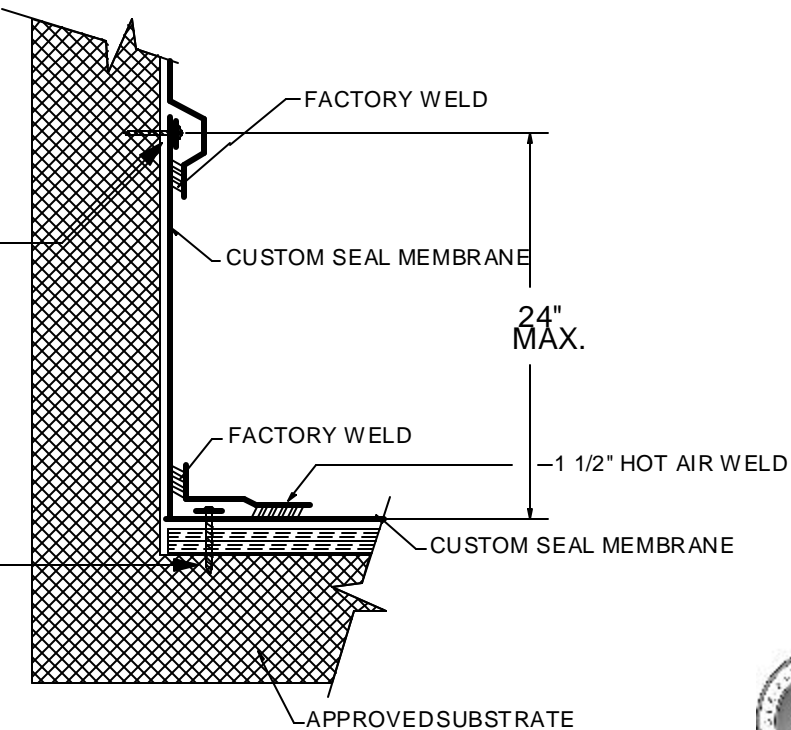
**Wall Base Flashing  
W/High Parapet**

**Detail #: PVC-1.11**

**(PVC) Systems**

1/03

CUSTOM SEAL PLATE OR METAL  
BAR ANCHOR W/APPROVED  
FASTENERS

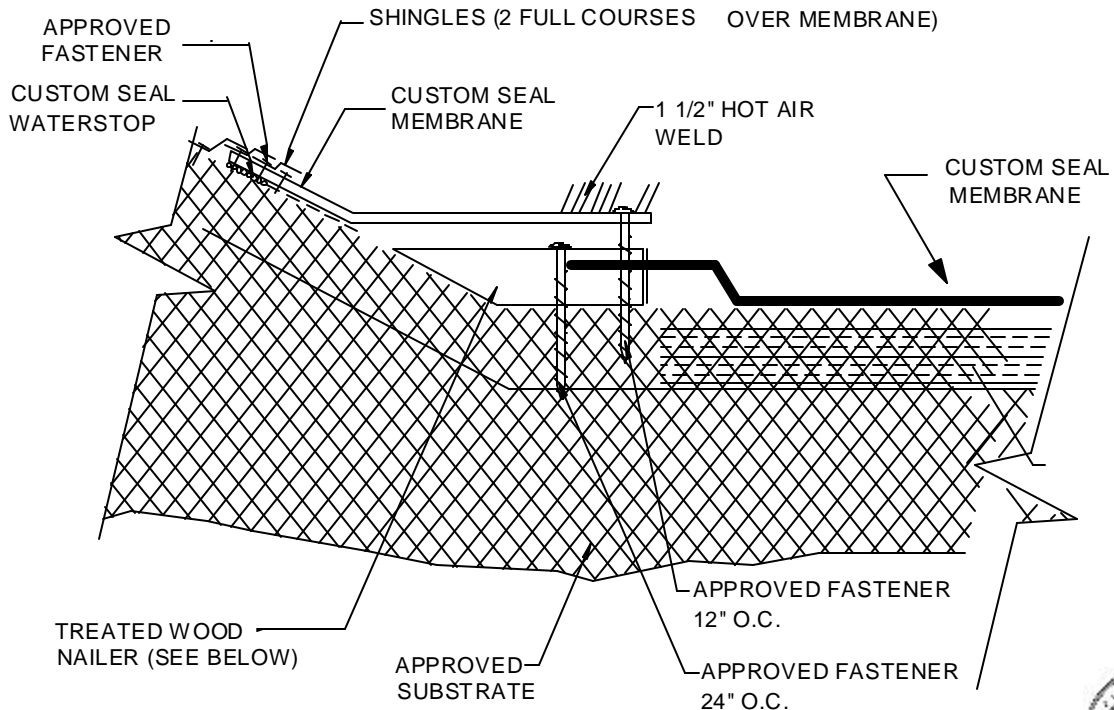


**Wall Termination  
Wall Base Flashing**

**Detail #: PVC-1.12**

**(PVC) Systems**

1/03



NOTE: ACCEPTABLE ROOFING NAILS MAY BE USED AT 4" O.C. PROVIDING A TREATED WOOD NAILER IS PRESENT

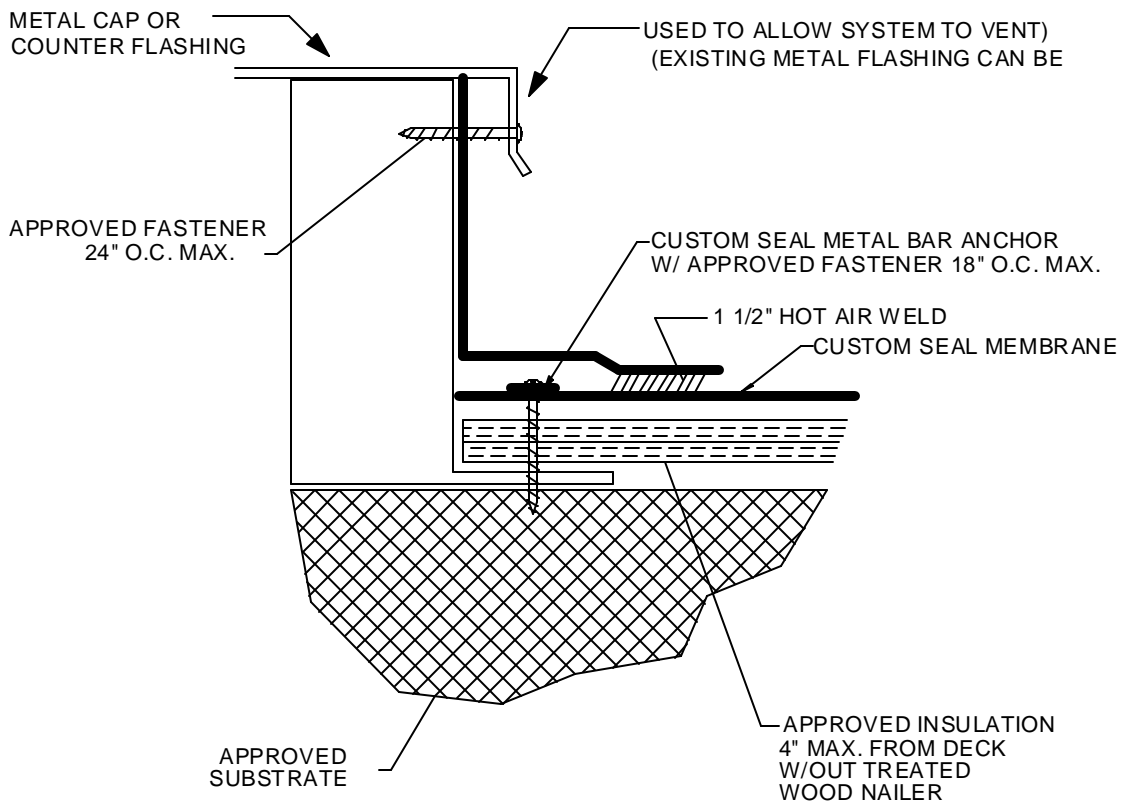


**Sloped Wall Transition**

**Detail #: PVC-1.13**

**(PVC) Systems**

1/03

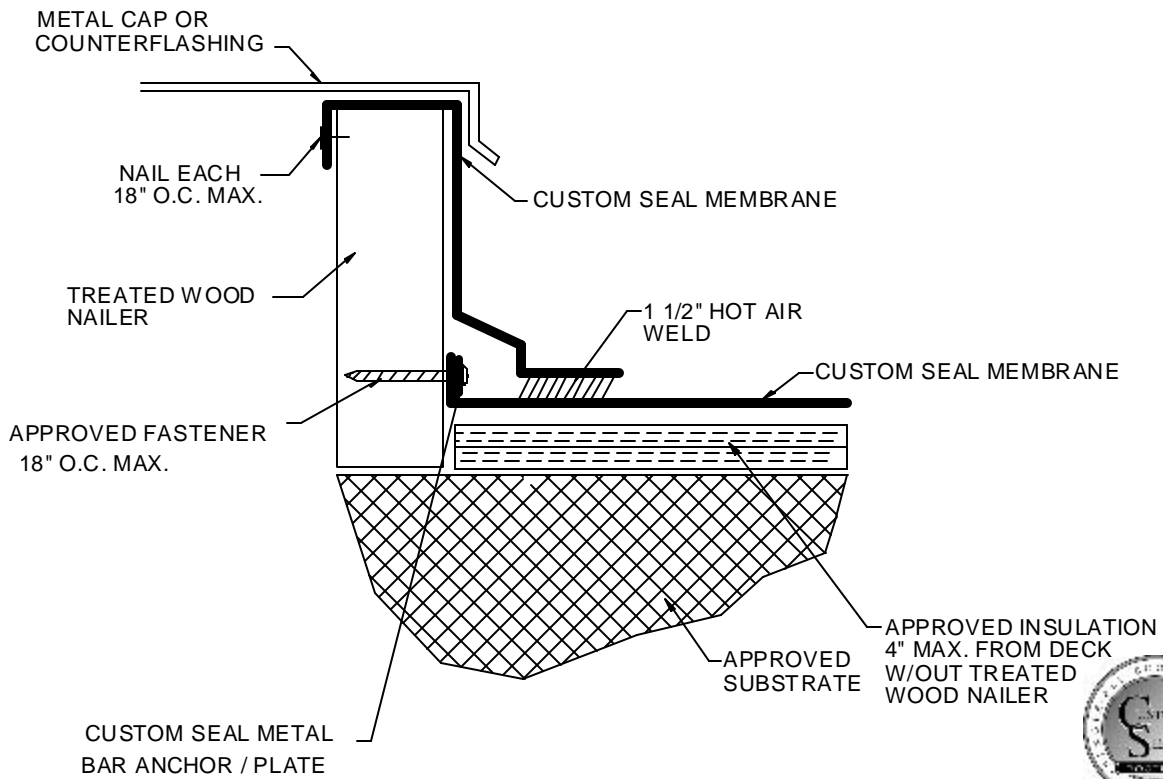


**Curb/Skylight  
Flashing**

**Detail #: PVC-1.14**

**(PVC) Systems**

1/03

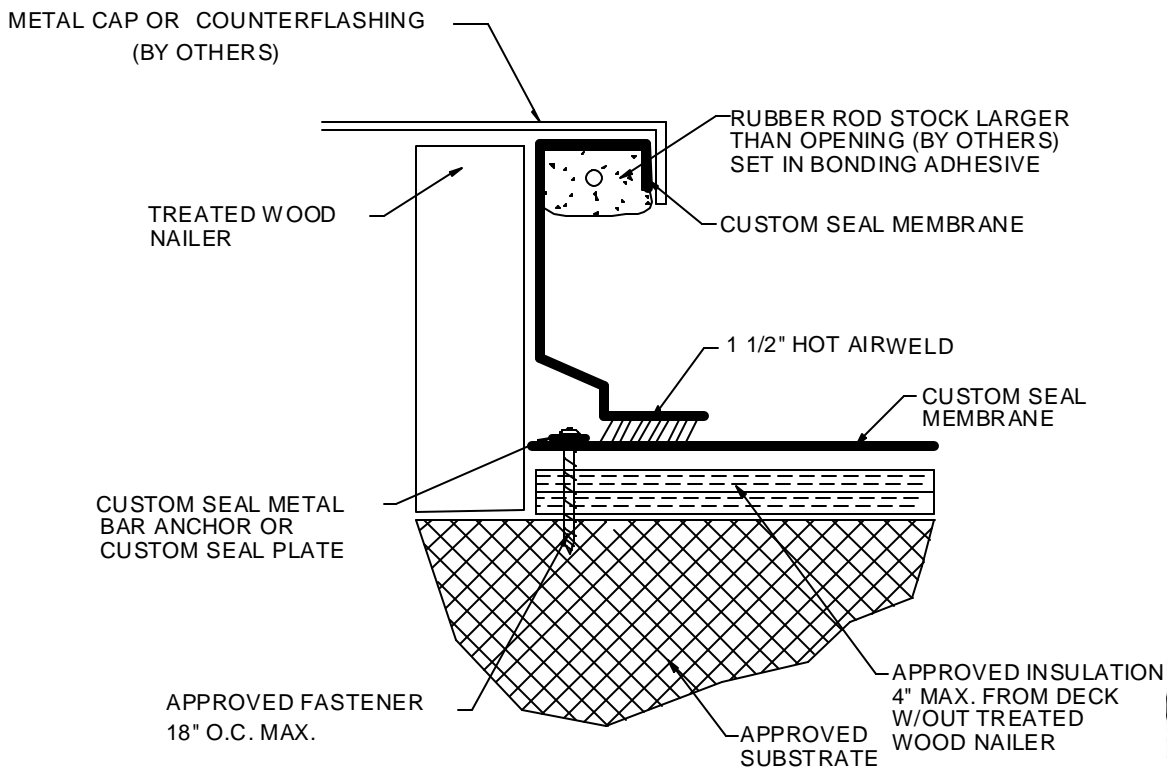


**Curb/Skylight Detail**

**Detail #: PVC-1.15**

**(PVC) Systems**

1/03

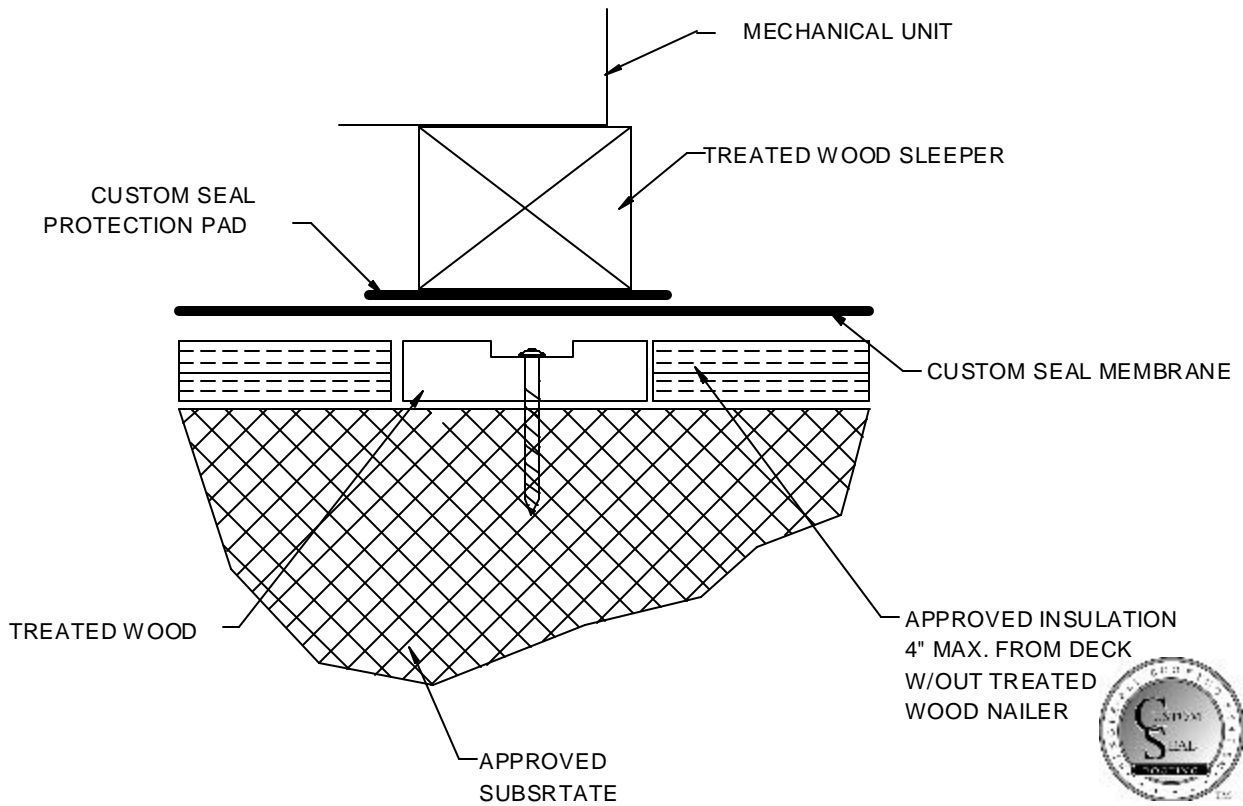


**Roof Hatch Detail**

**Detail #: PVC-1.16**

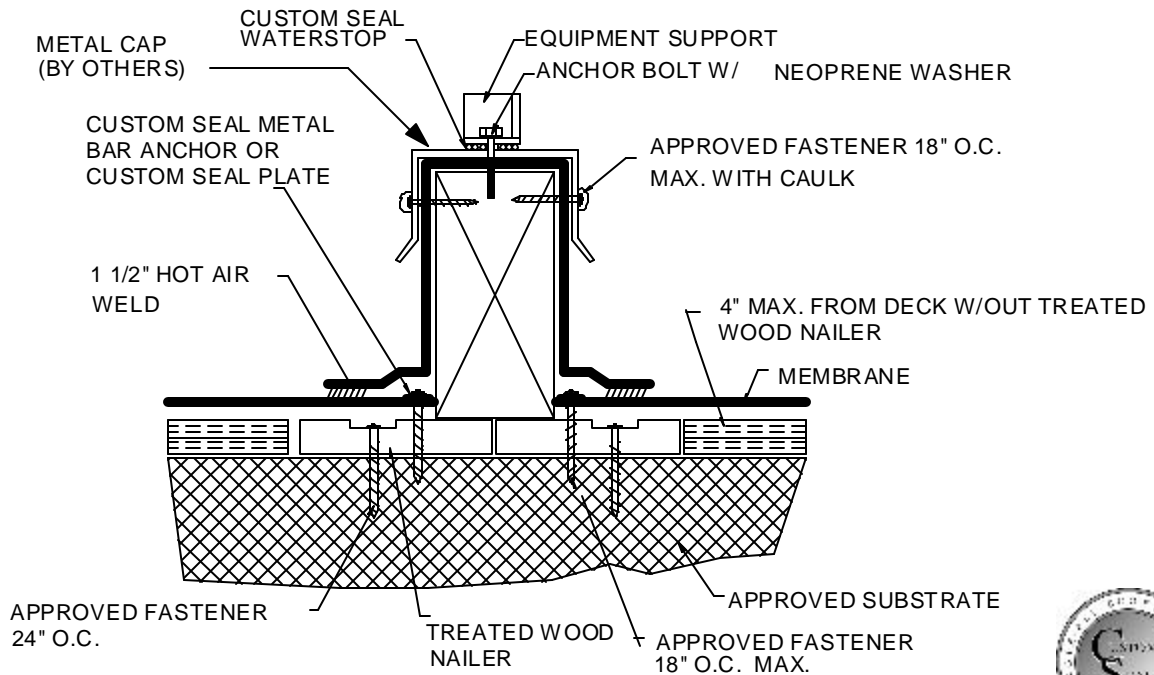
**(PVC) Systems**

1/03



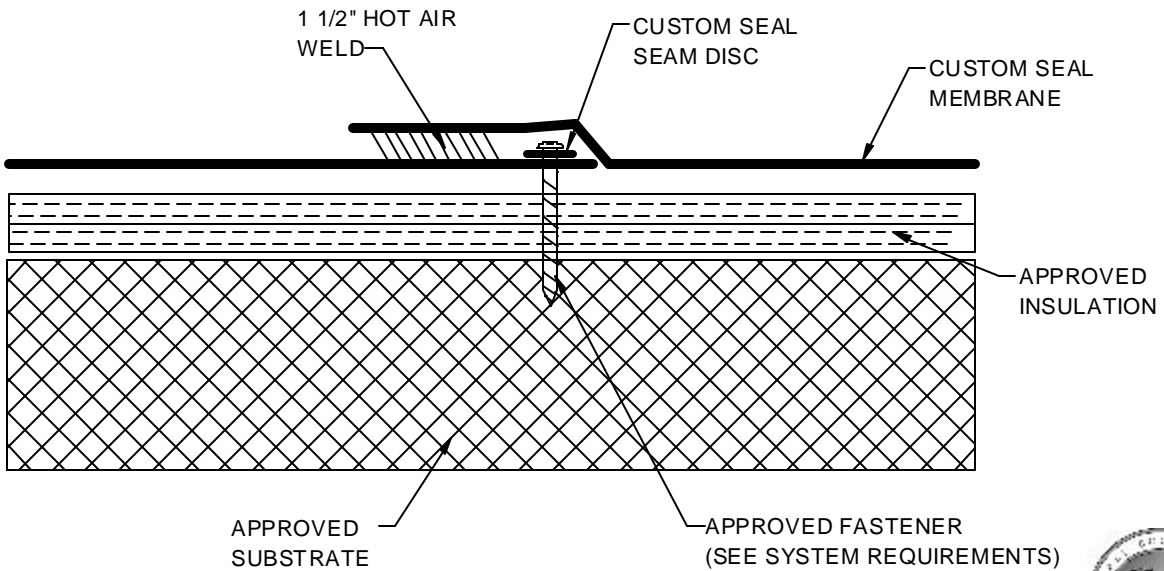
<b>Sleeper Detail</b>	<b>Detail #: PVC-1.17</b>	<b>(PVC) Systems</b>
-----------------------	---------------------------	----------------------

1/03



<b>Sleeper Curb Detail</b>	<b>Detail #: PVC-1.18</b>	<b>(PVC) Systems</b>
----------------------------	---------------------------	----------------------

1/03

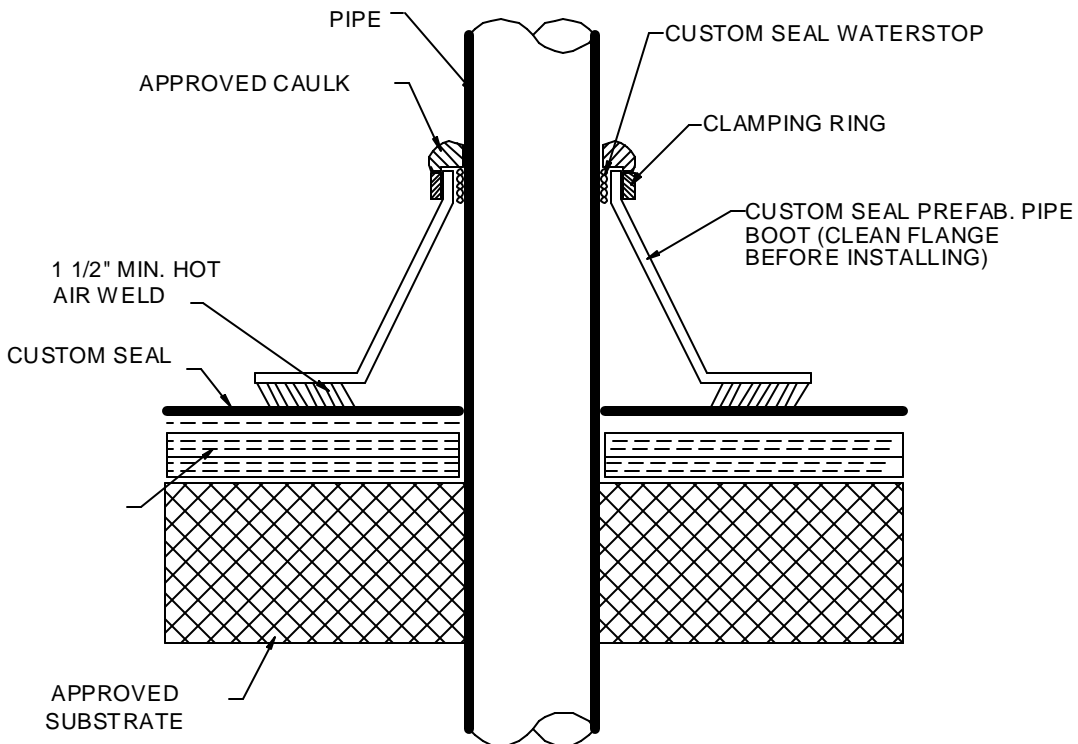


**Custom Seal Mechanically Attached**

**Detail #: PVC-1.19**

**(PVC) Systems**

1/03



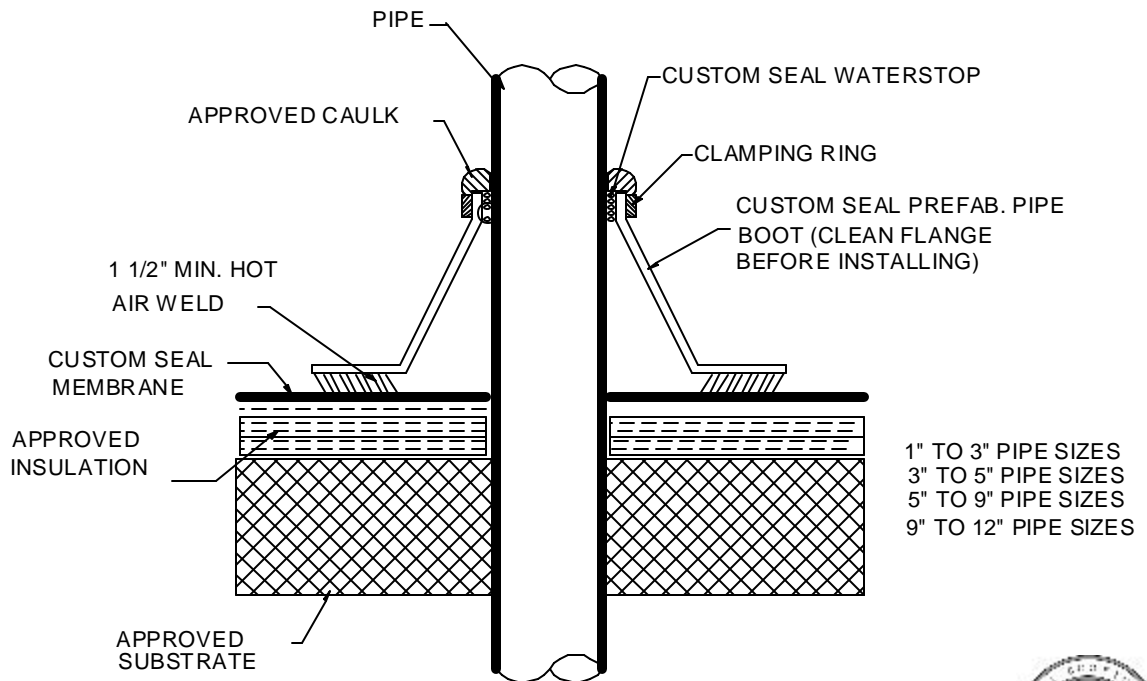
FOR (1" TO 3") (3" TO 6") (6" TO 9") (9" TO 12") PIPE SIZES

**Prefabricated Closed  
Pipe Boot**

**Detail #: PVC-1.20**

**(PVC) Systems**

1/03



\*NOTE\* WRAP THE OPEN FLASHING AROUND THE PIPE. BRING THE TWO SIDES TOGETHER ALLOWING FOR A 2" OVERLAP. WELD TRANSITION FROM VERTICAL TO HORIZONTAL FIRST, THEN WELD THE VERTICAL, AND FINISH WITH THE HORIZONTAL.

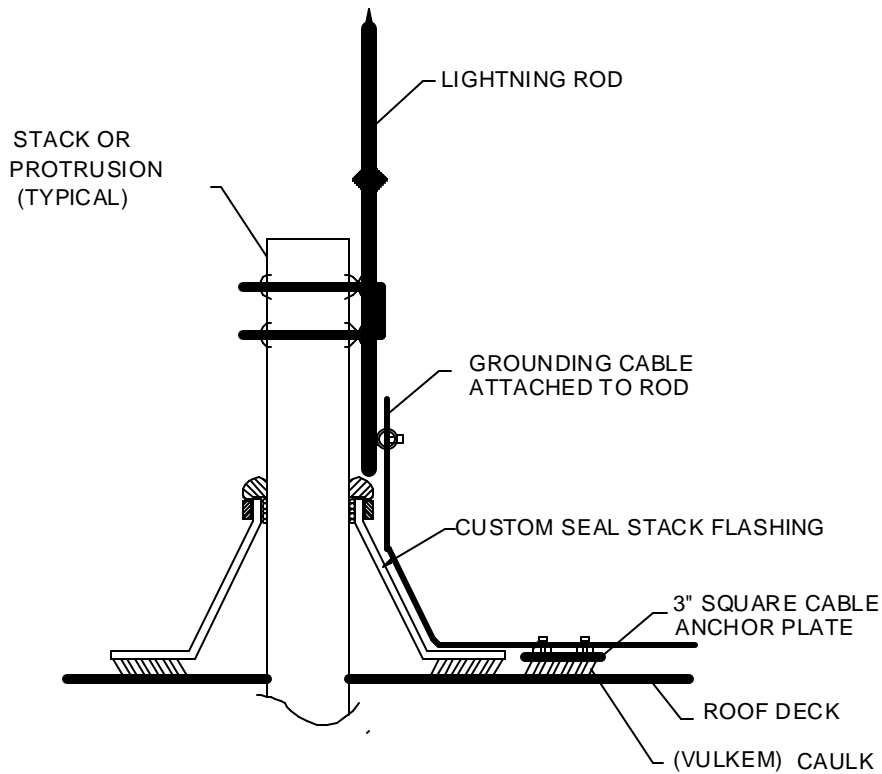


**Prefabricated Open Pipe Boot**

**Detail #: PVC-1.21**

**(PVC) Systems**

1/03

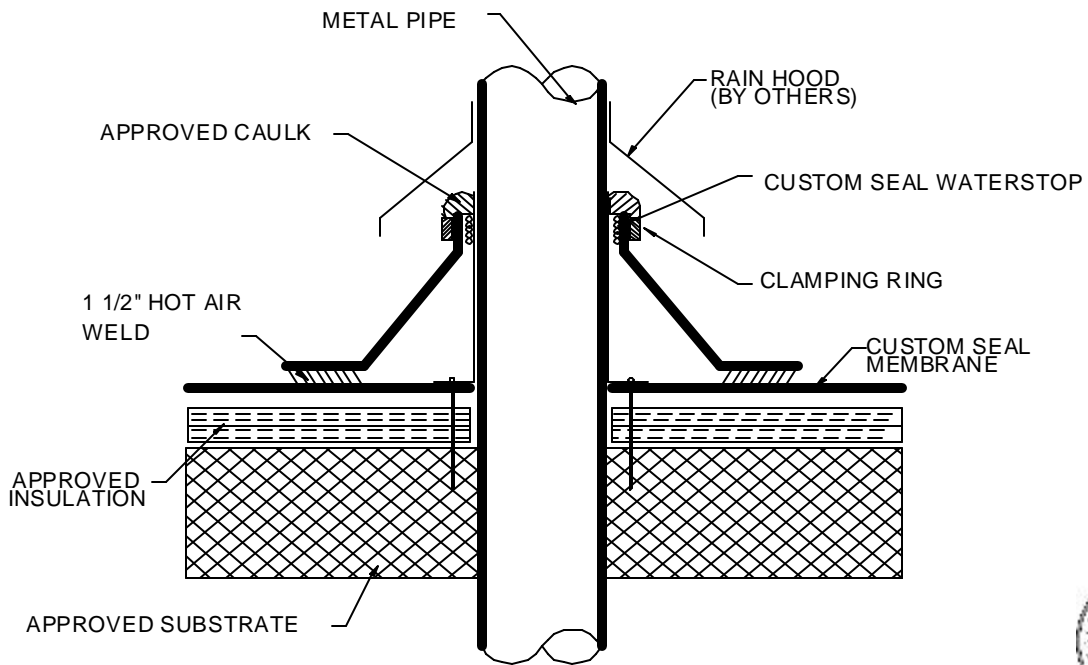


**Lightning Rod Detail**

**Detail #: PVC-1.22**

**(PVC) Systems**

1/03

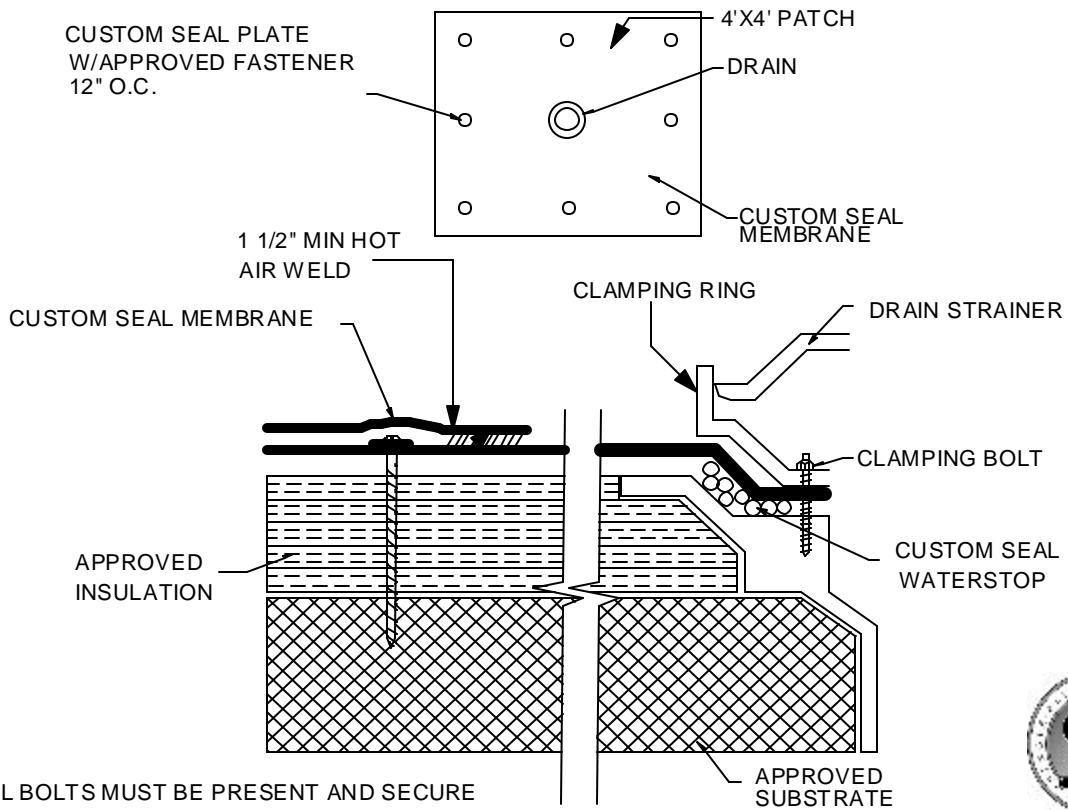


**Pre-Fab Hot stack flashing**

**Detail # PVC-1.23**

**(PVC) Systems**

1/03



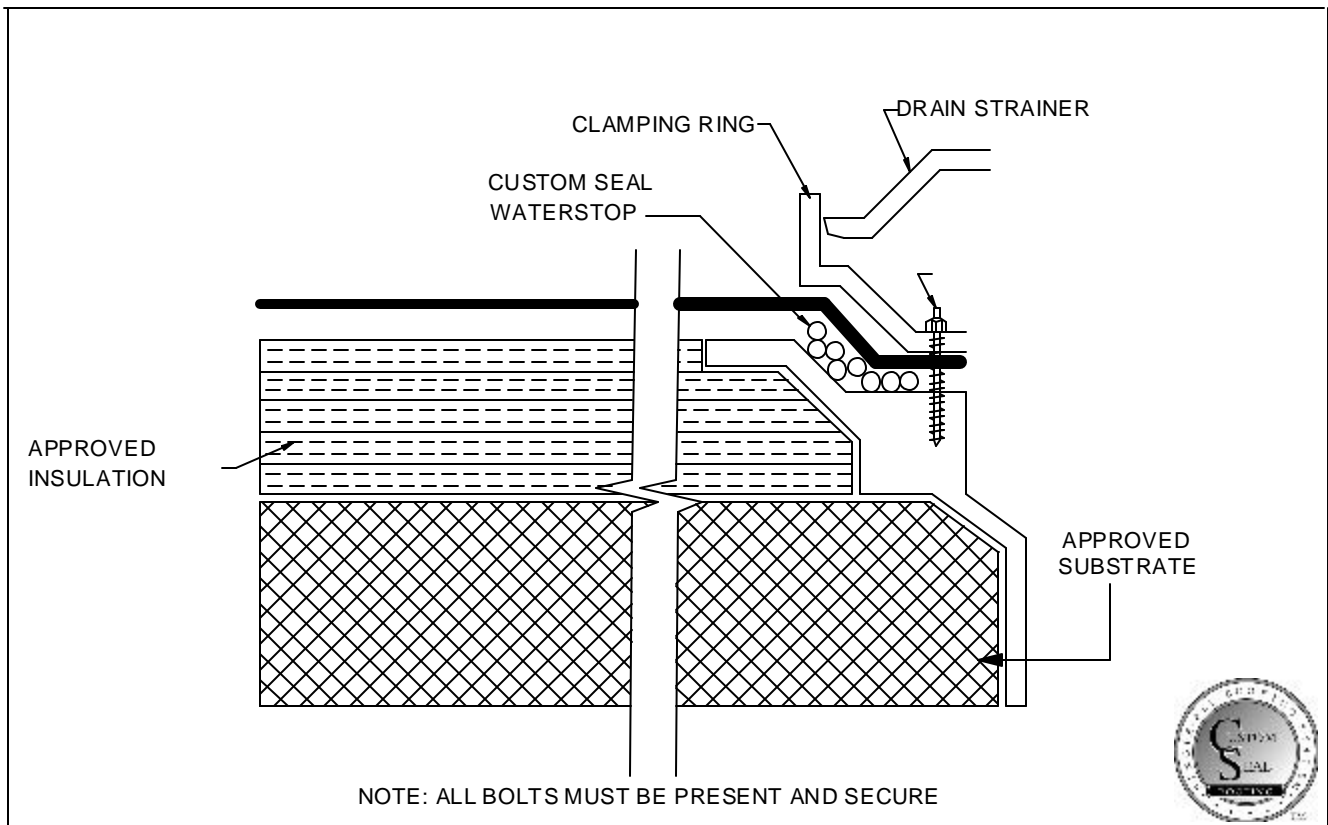
NOTE: ALL BOLTS MUST BE PRESENT AND SECURE

**Sump Roof Detail Option**

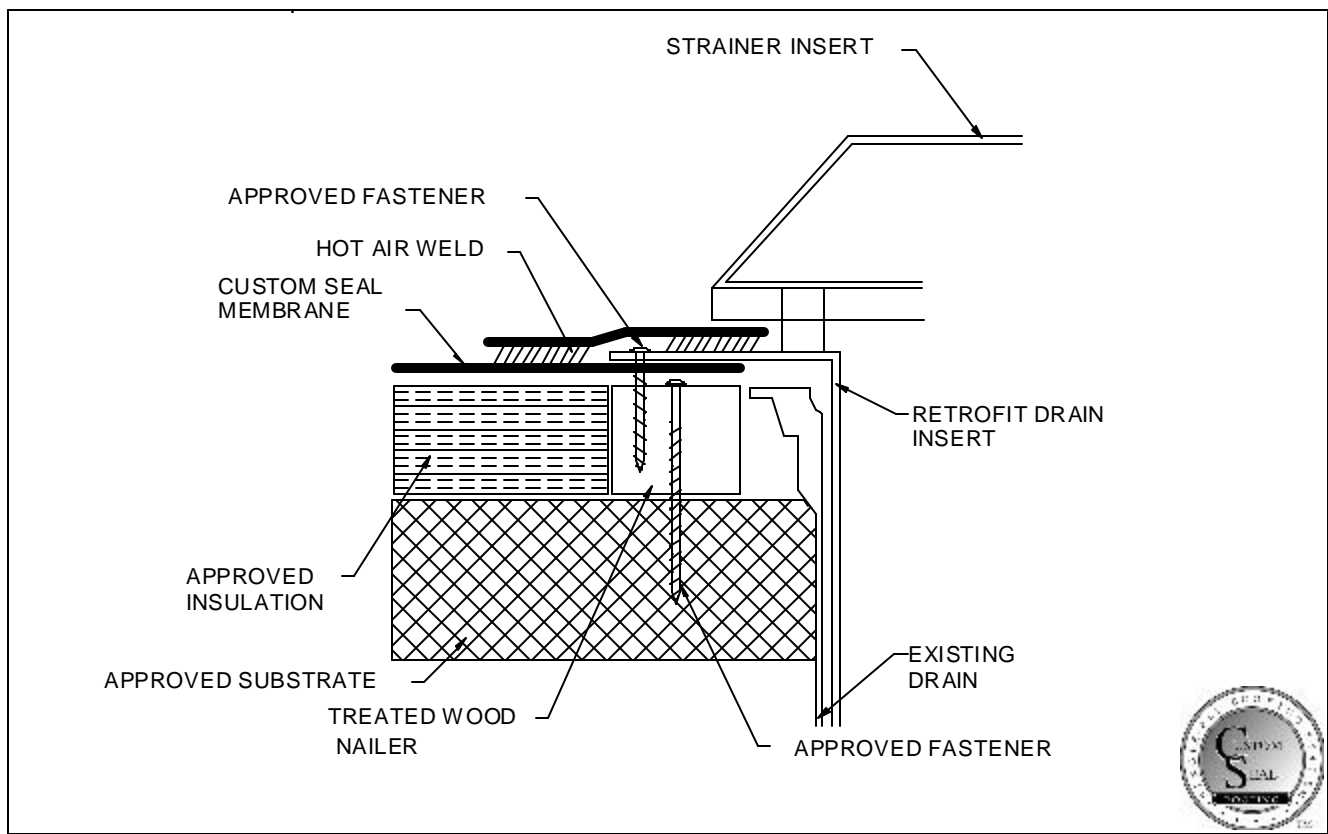
**Detail # PVC-1.24**

**(PVC) Systems**

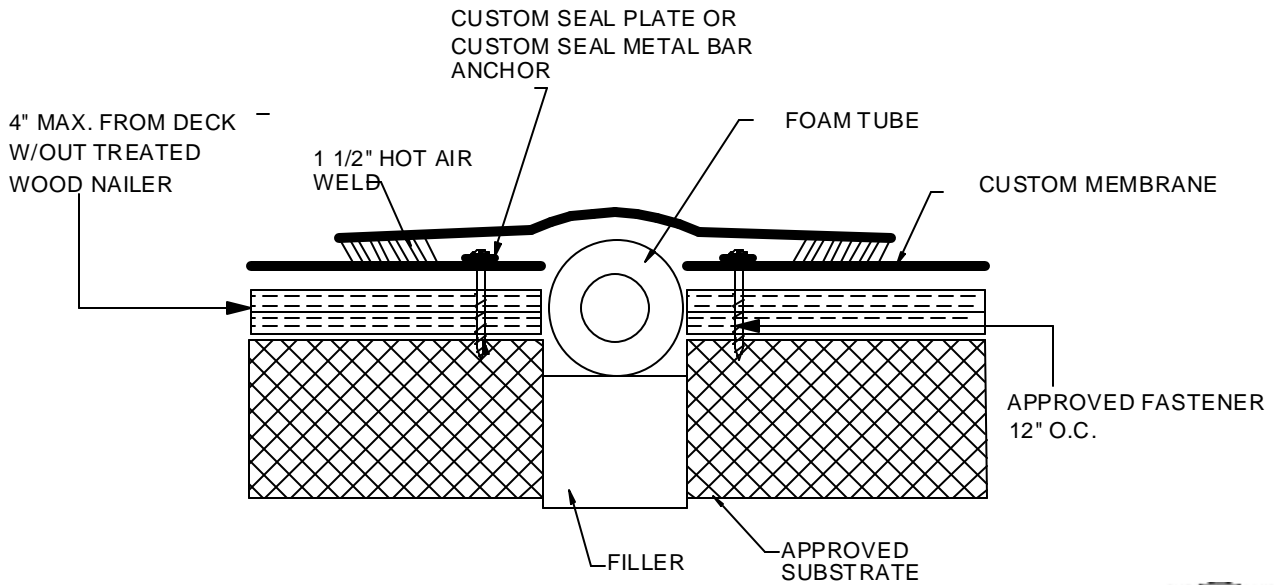
1/03



<b>Existing/New Sump Roof Drain</b>	<b>Detail # PVC-1.25</b>	<b>(PVC) Systems</b>	1/03
-------------------------------------	--------------------------	----------------------	------



<b>Roof Drain Insert</b>	<b>Detail # PVC-1.26</b>	<b>(PVC) Systems</b>	1/03
--------------------------	--------------------------	----------------------	------



NOTE: EXPANSION JOINTS MUST BE DONE ACCORDING TO CUSTOM SEAL INC.  
STANDARD DETAILS OR PRE-APPROVED SHOP DRAWINGS.

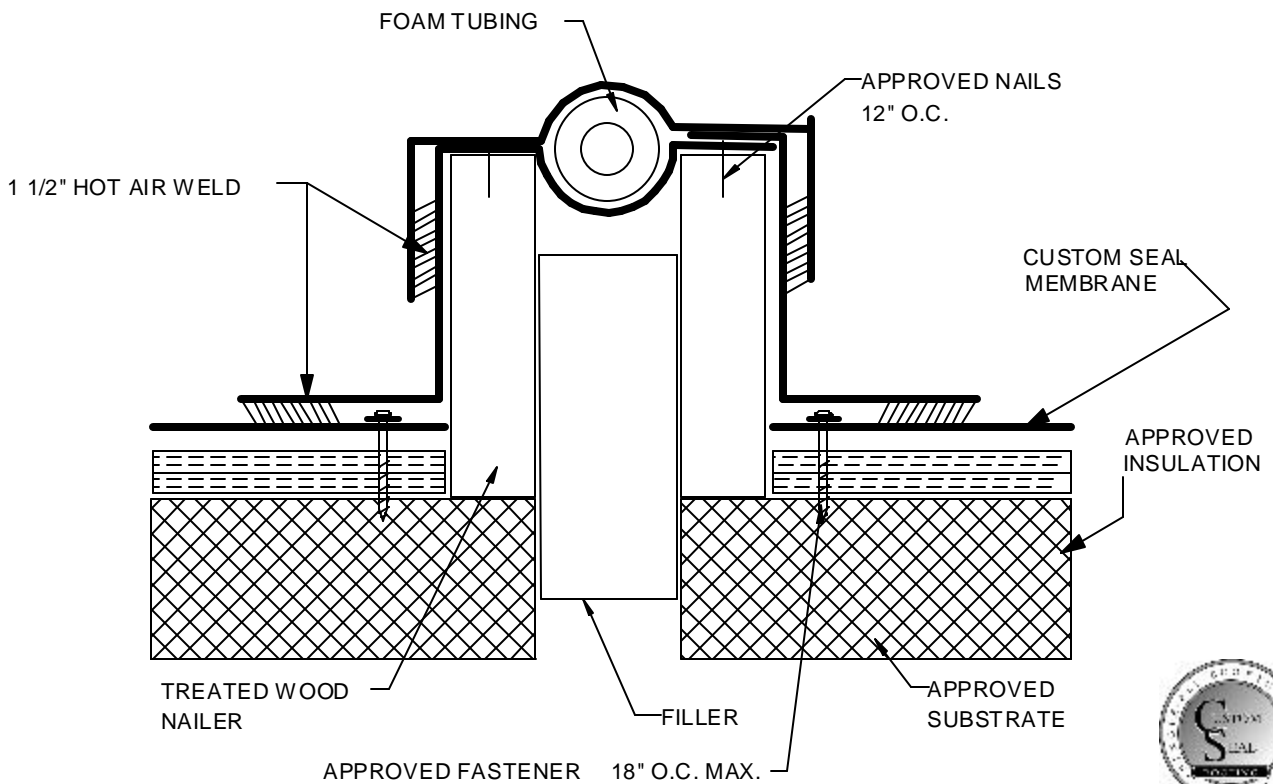


**Flat Expansion Or Control Joint**

**Detail # PVC-1.27**

**(PVC) Systems**

1/03

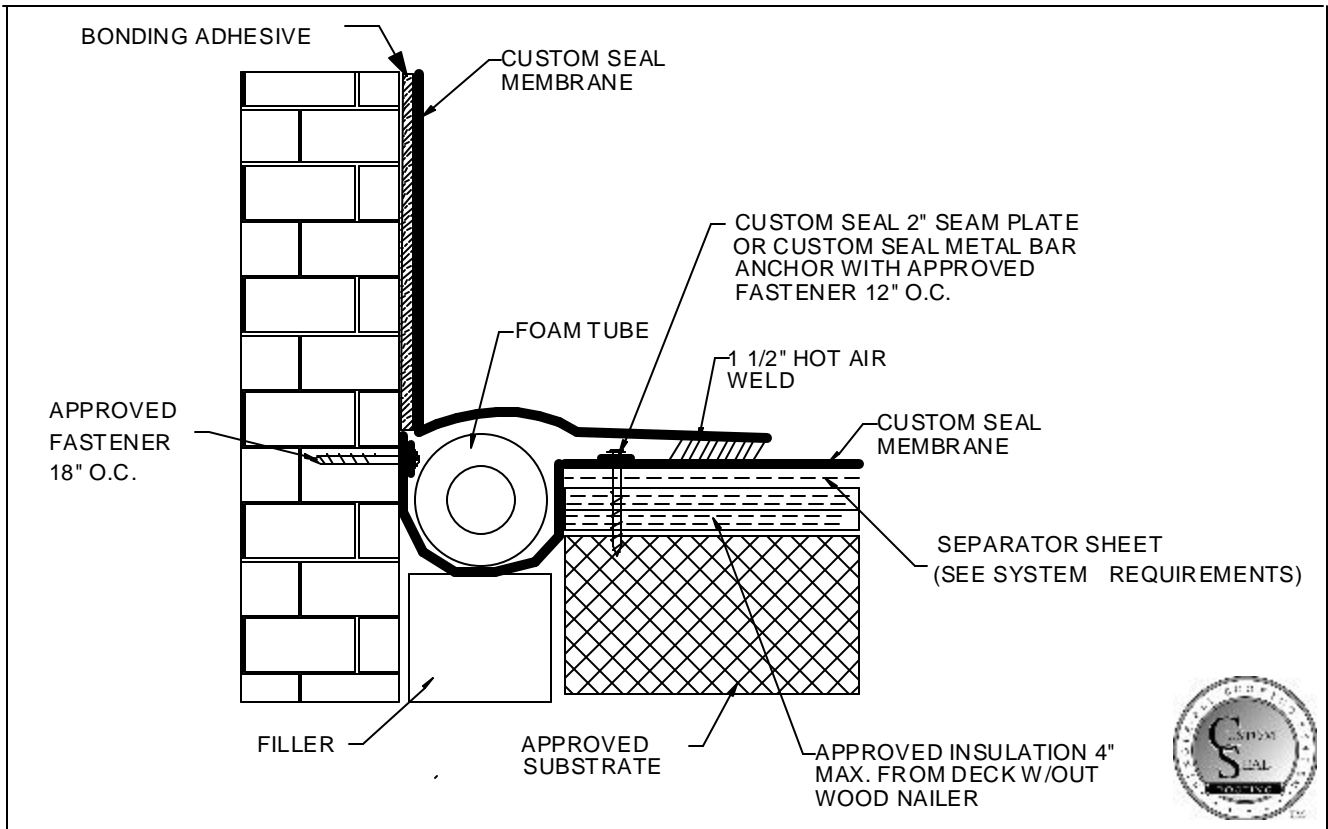


**Raised Expansion Joint**

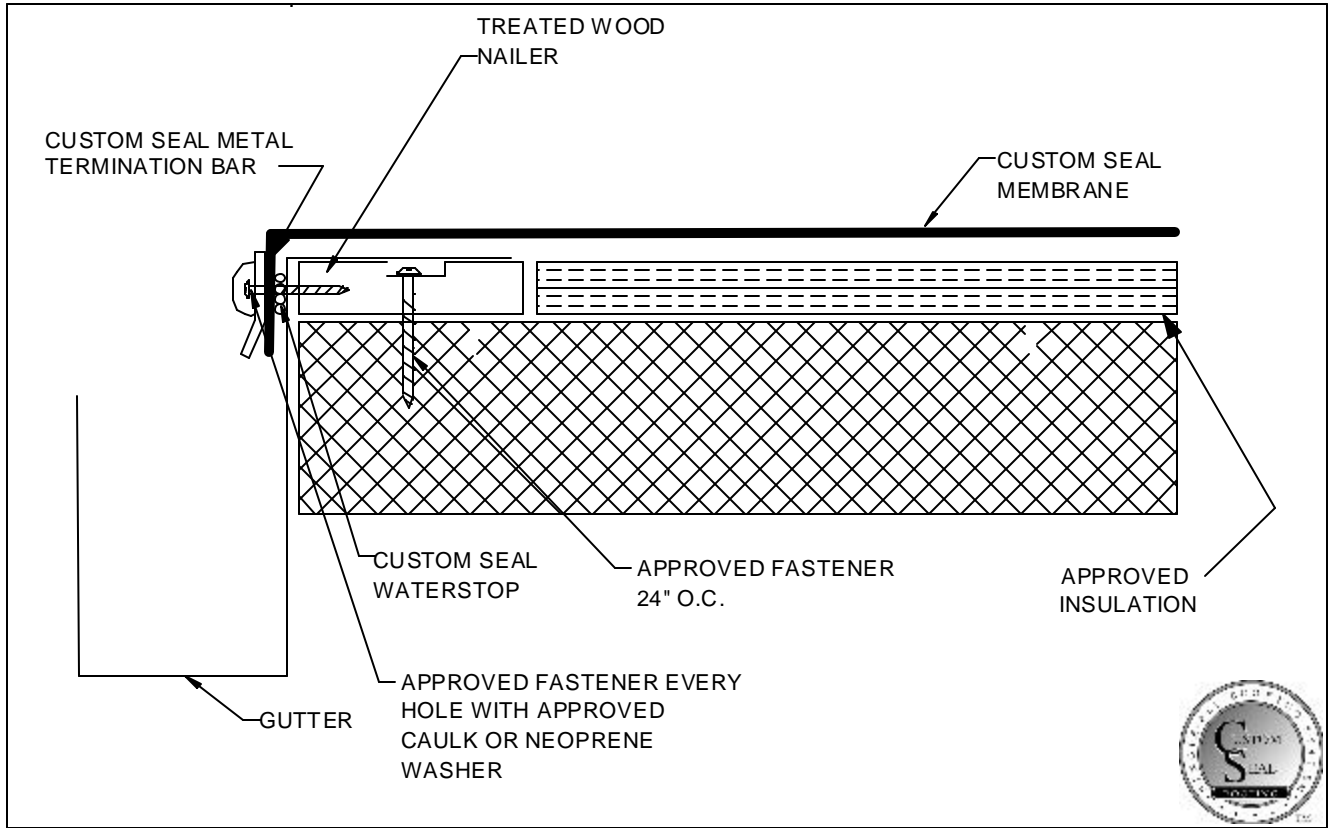
**Detail # PVC-1.28**

**(PVC) Systems**

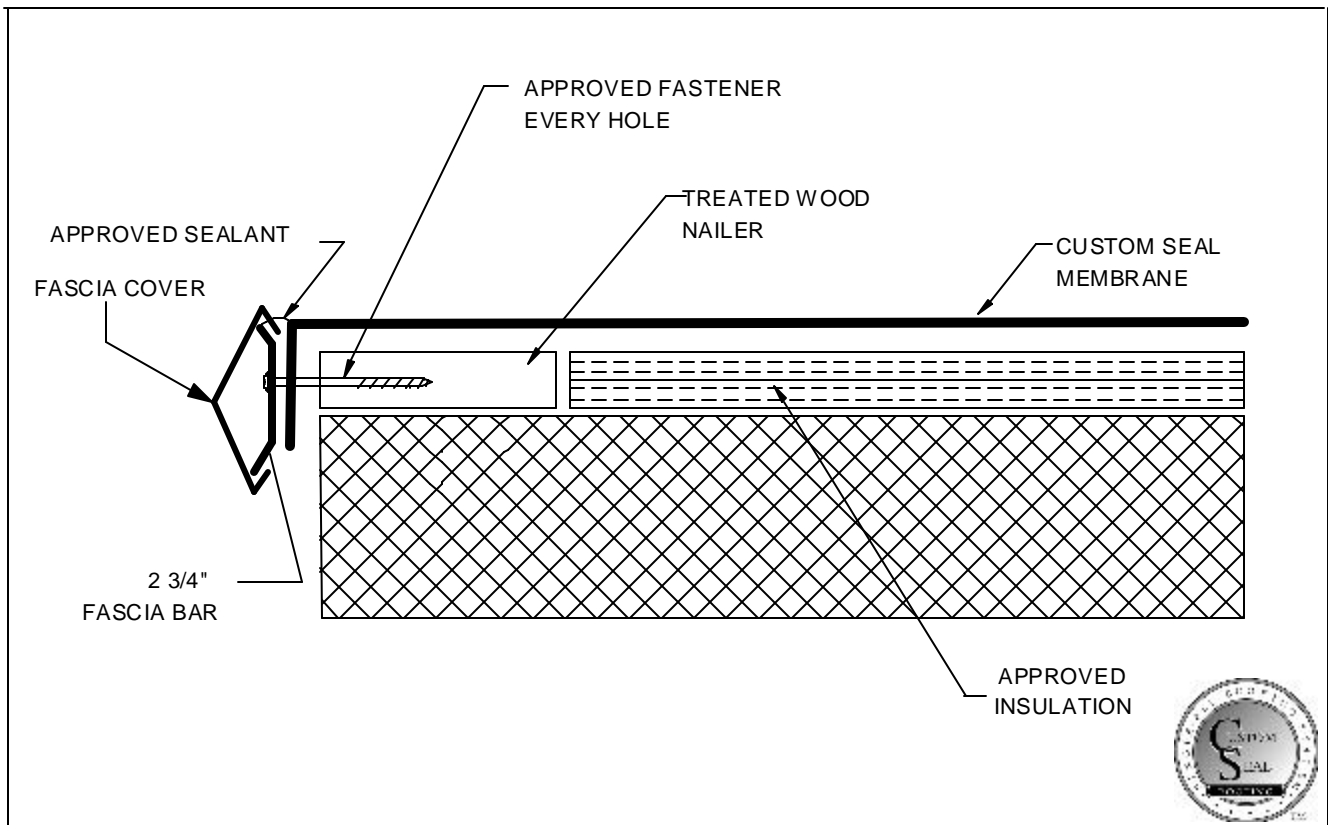
1/03



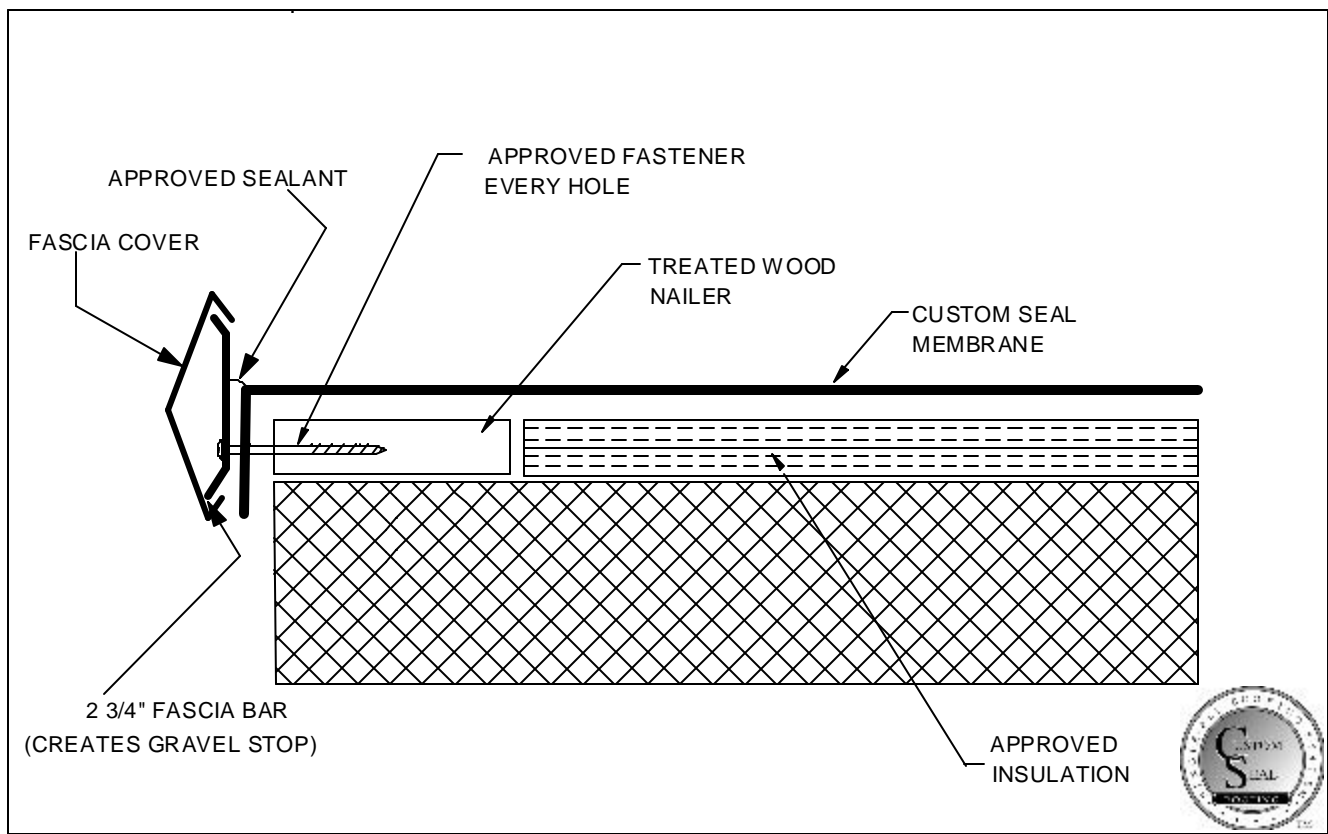
<b>Expansion Joint Base Of Wall</b>	<b>Detail # PVC-1.29</b>	<b>(PVC) Systems</b>
		1/03



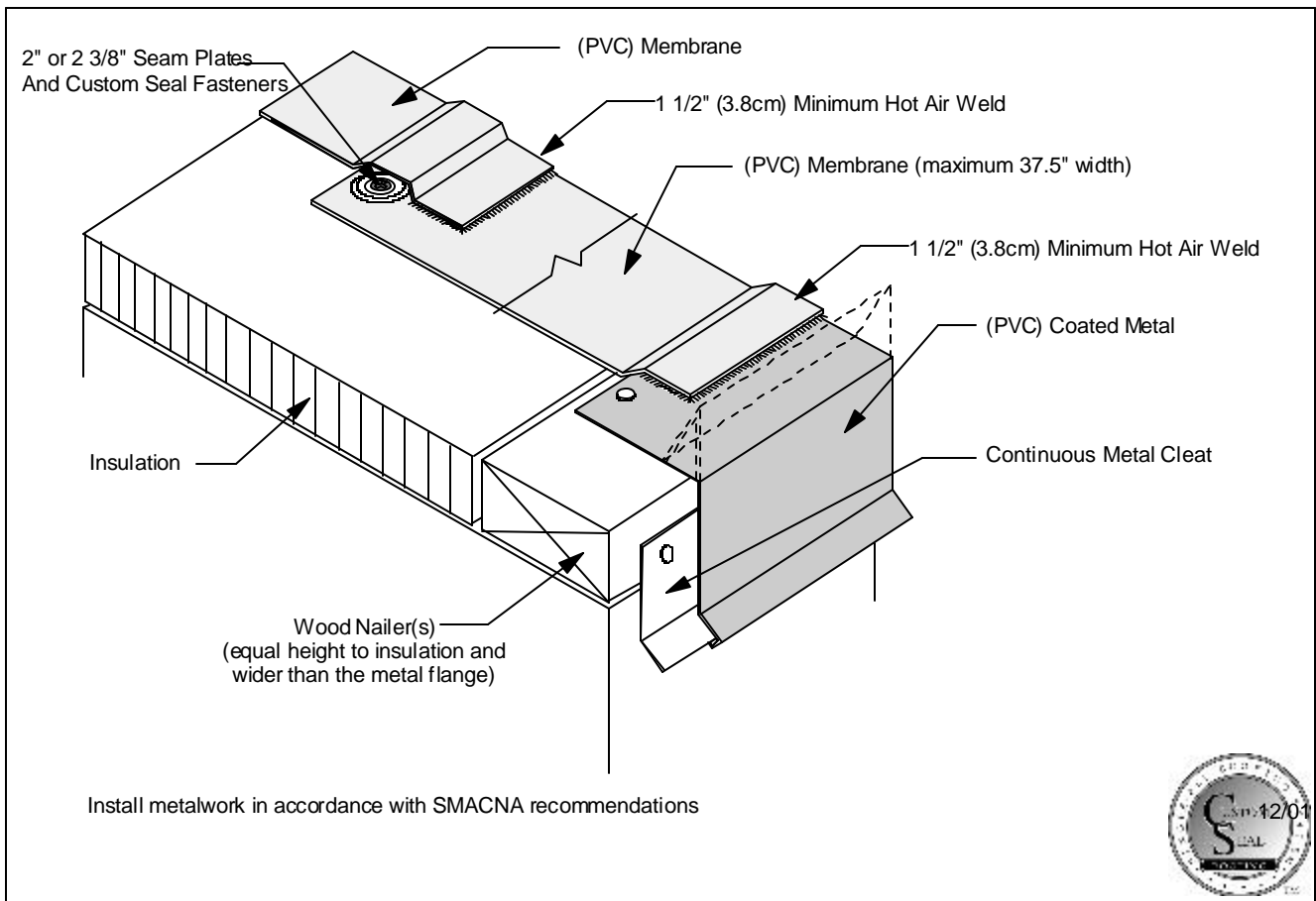
<b>Gutter Termination</b>	<b>Detail # PVC-1.30</b>	<b>(PVC) Systems</b>
		1/03



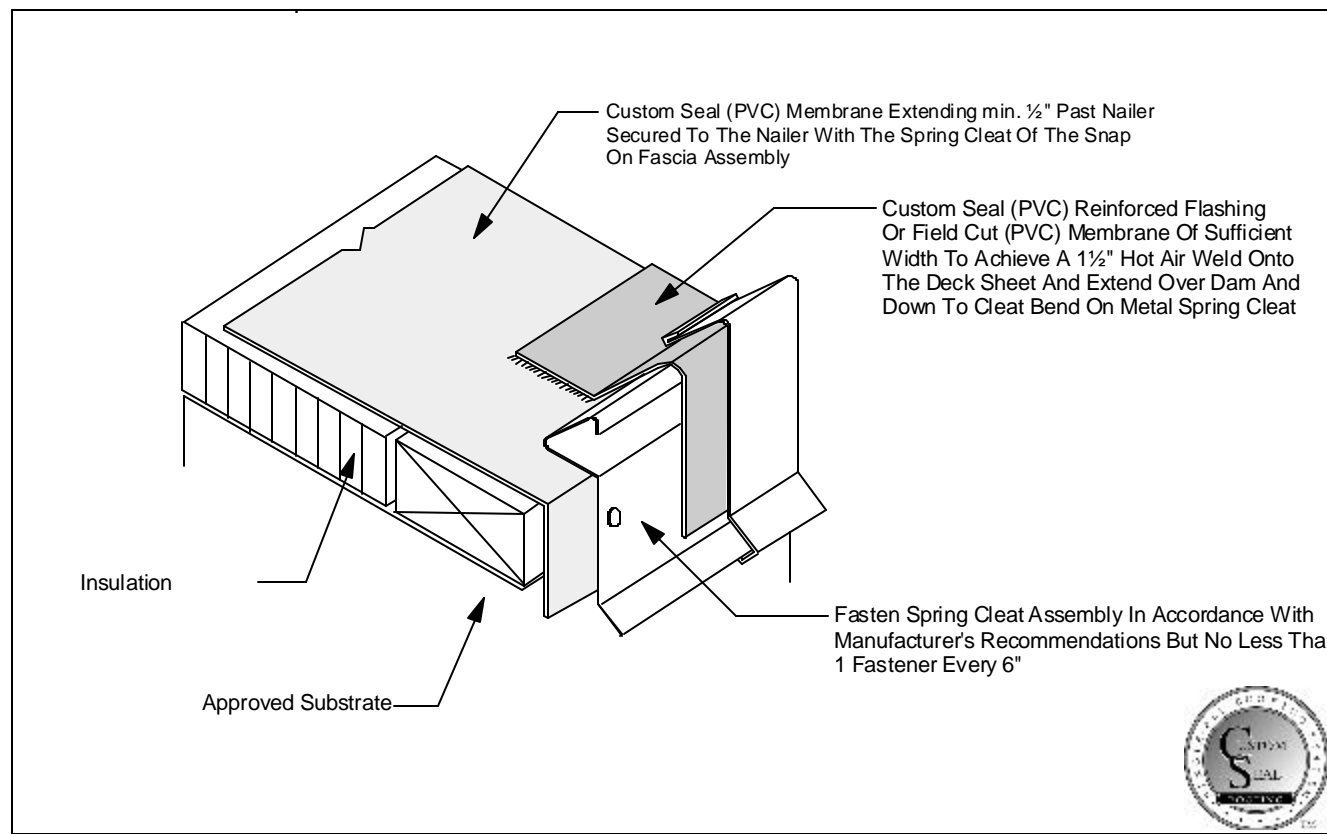
<b>Custom Seal 2 3/4" Fascia Bar/Cover</b>	<b>Detail # PVC-1.31</b>	<b>(PVC) Systems</b>	1/03
--	--------------------------	----------------------	------



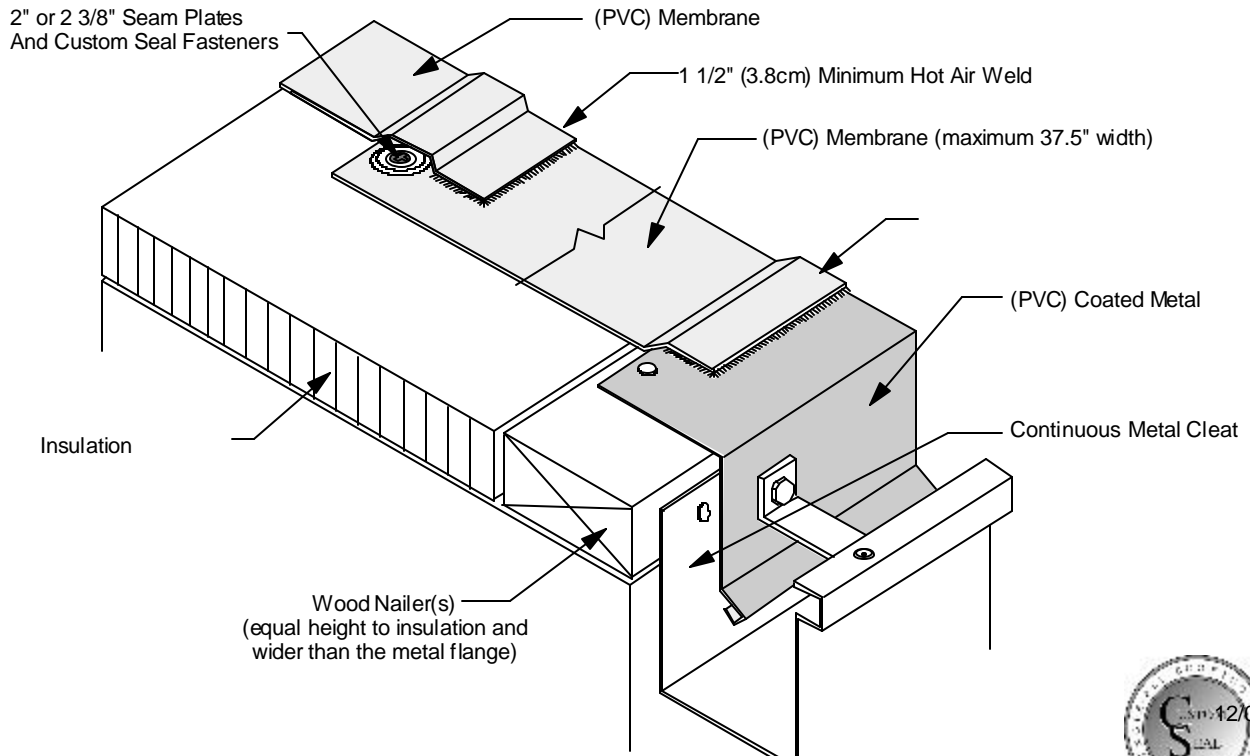
<b>2 3/4" Fascia Bar Raised To Create Gravel Stop</b>	<b>Detail # PVC-1.32</b>	<b>(PVC) Systems</b>	1/03
---	--------------------------	----------------------	------



<b>PVC Coated Metal Gravel Stop/Drip Edge</b>	<b>Detail #: PVC-1.32a</b>	<b>(PVC) Systems</b> 1/03
---	----------------------------	---------------------------



<b>Snap On Two Piece Fascia Assembly</b>	<b>Detail #: PVC-1.32b</b>	<b>(PVC) Systems</b> 1/03
--	----------------------------	---------------------------



Install metalwork in accordance with SMACNA recommendations

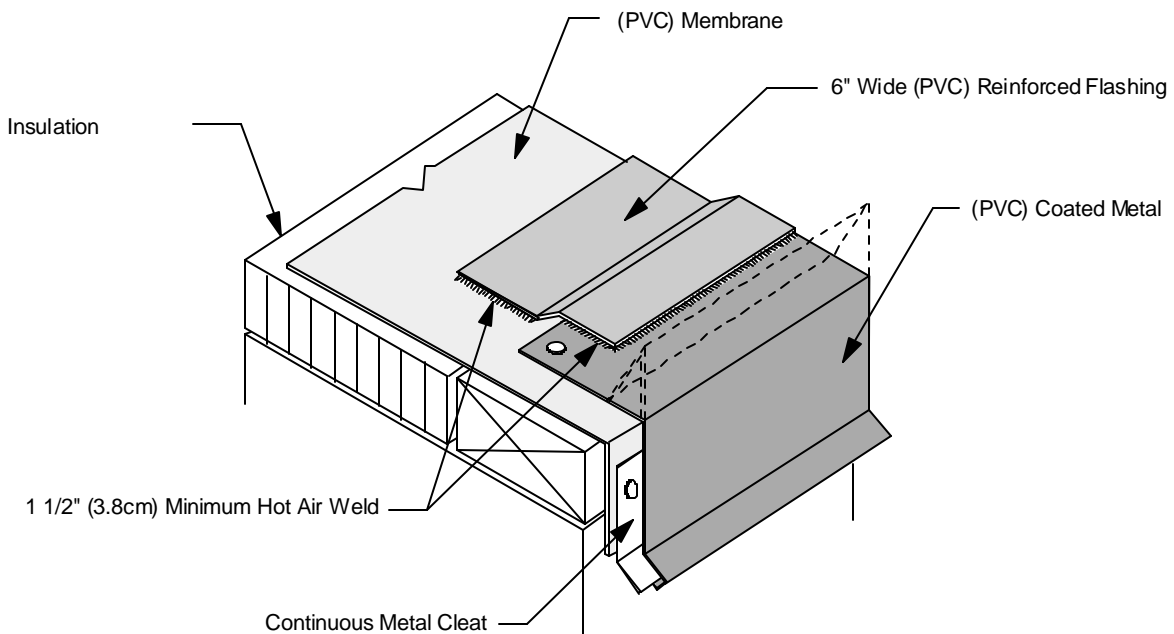


**PVC Coated Metal Gravel  
Stop/Drip Edge**

**Detail #: PVC-1.32c**

**(PVC) Systems**

1/03



Install metalwork in accordance with SMACNA recommendations

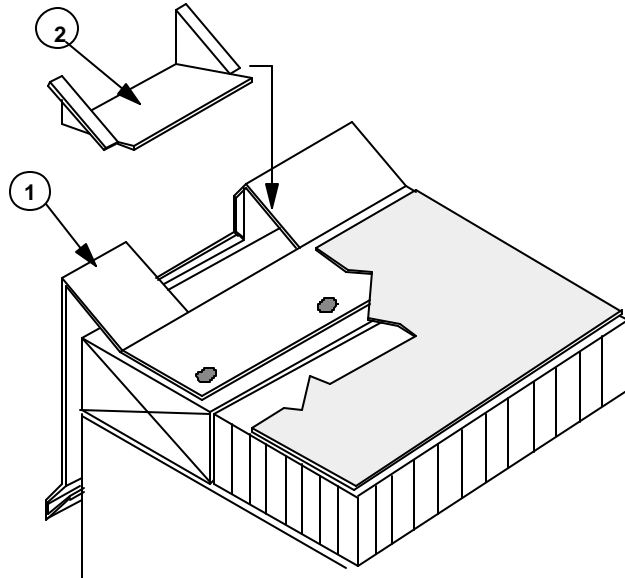


**(PVC) Coated Metal Gravel  
Stop / Drip Edge - Option 2**

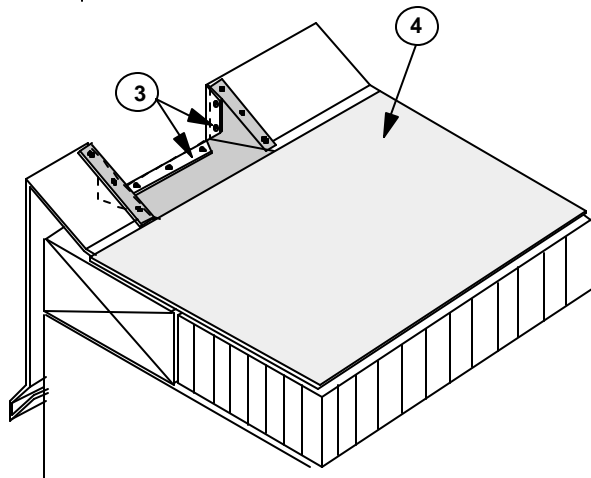
**Detail #: PVC-1.32d**

**(PVC) Systems**

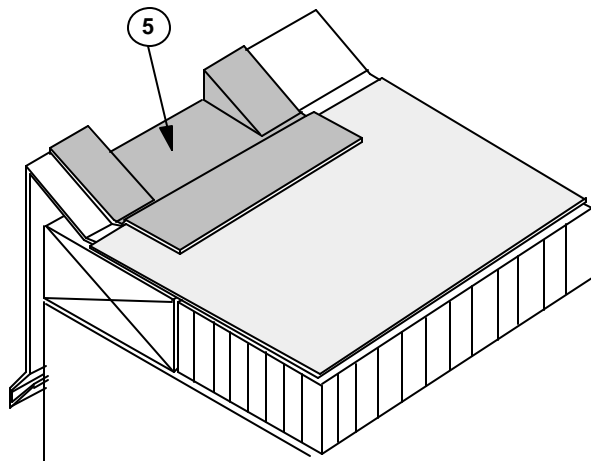
1/03



1. Cut opening into gravel stop fascia and dam leaving 1" minimum tabs on the 3 sides of the fascia that will connect with scupper sleeve.
2. Fabricate sleeve to fit opening.



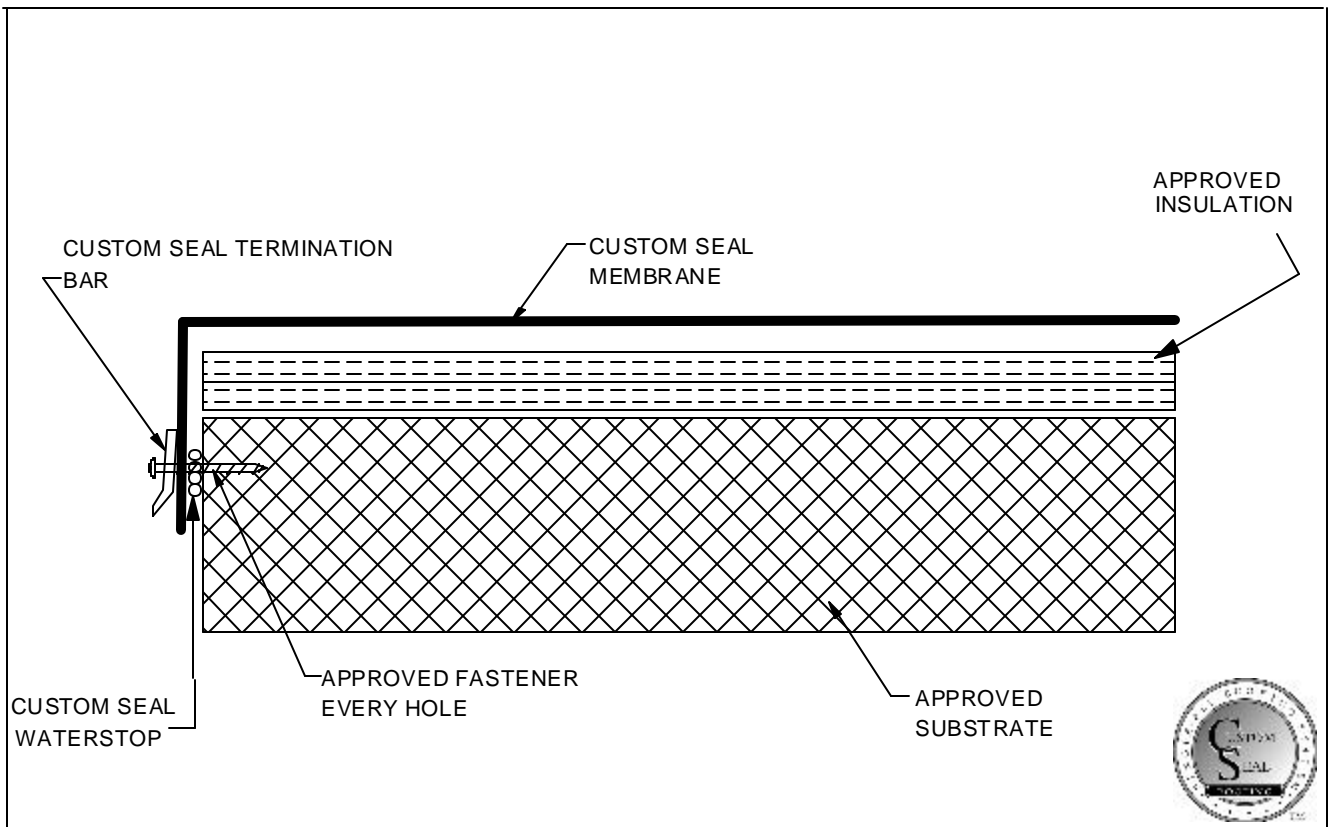
3. Set tabs of sleeve in a bead of approved sealant onto the gravel stop / fascia and bend fascia tabs into the front of the sleeve into another bead of approved sealant and pop rivet into place as shown. Fabrication and assembly are to comply with SMACNA recommendations.
4. Strip in gravel stop flange according to system specification with the deck sheet.



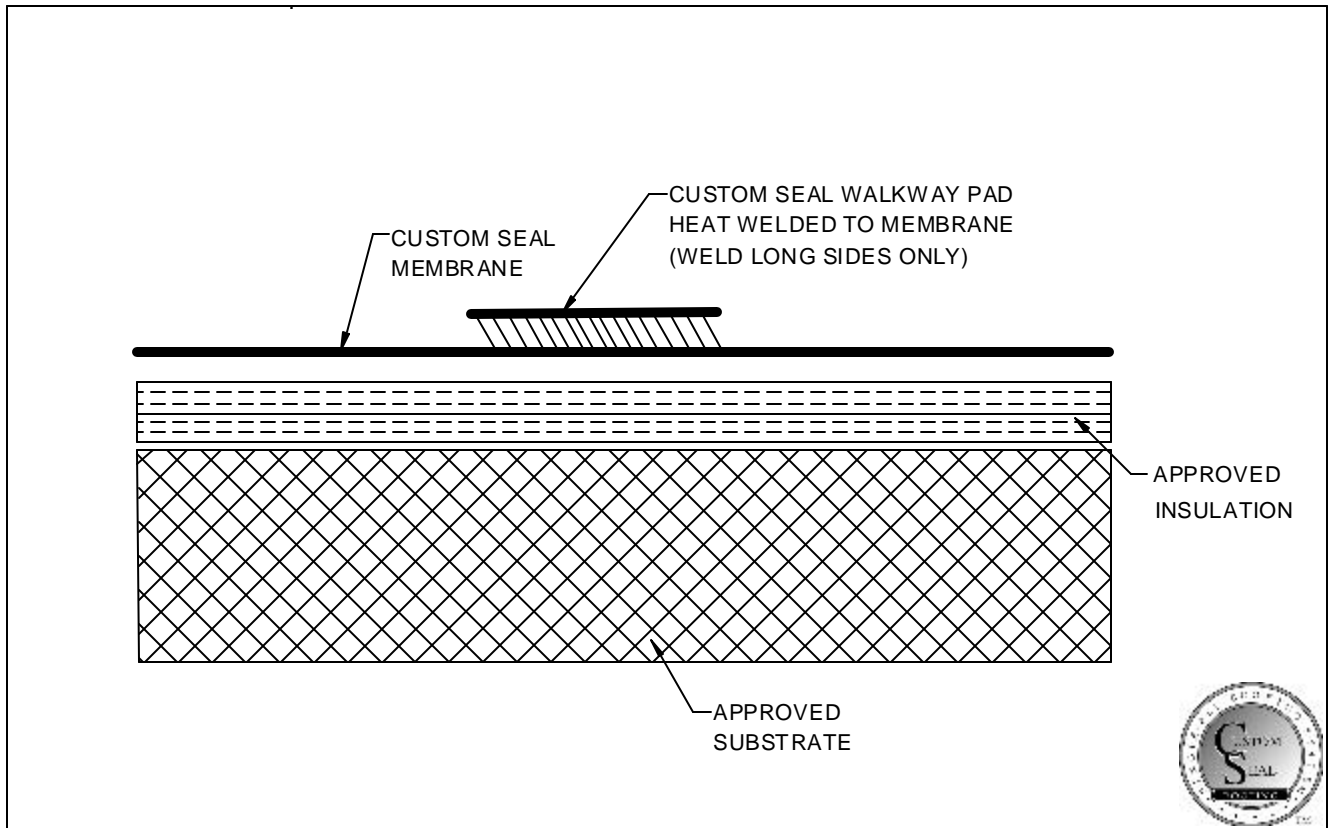
5. Flash sleeve with unsupported flashing.
6. Treat metal joints in accordance with detail R-14.09.

Refer to appropriate edge detail for metal edge requirements - the focus of this detail is the fabrication of a gravelstop scupper.

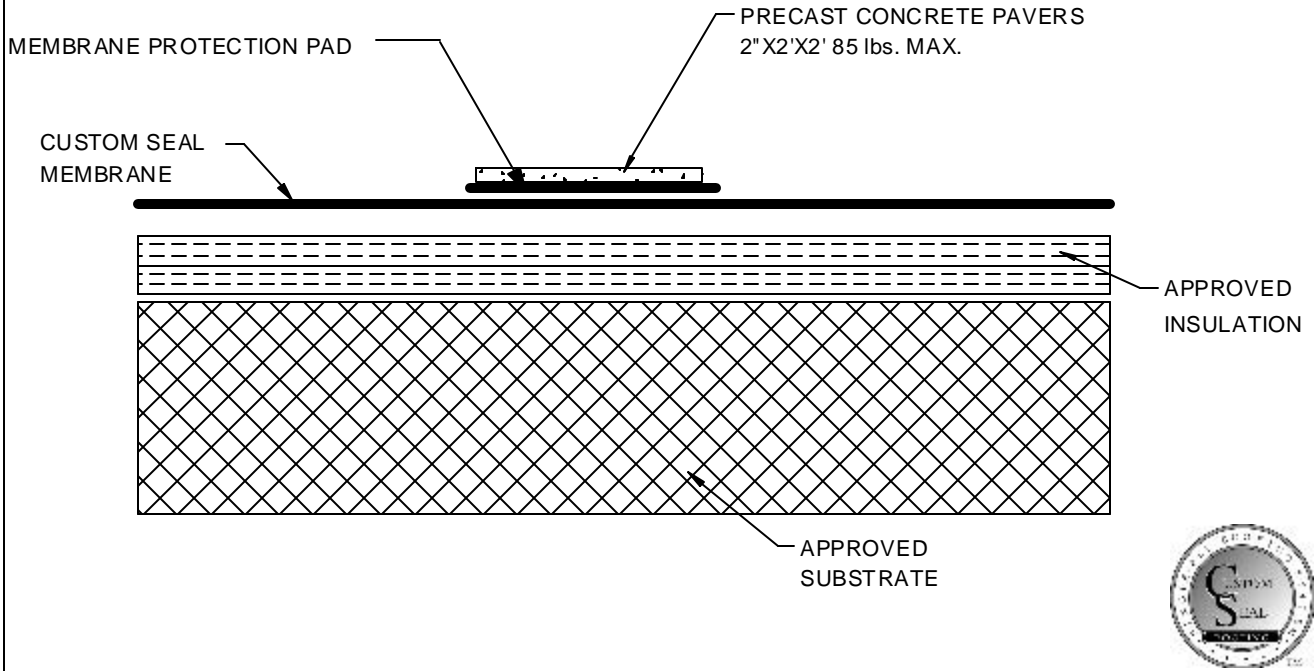




<b>Custom Seal Term Bar Over Edge</b>	<b>Detail # PVC-1.33</b>	<b>(PVC) Systems</b>	1/03
---------------------------------------	--------------------------	----------------------	------



<b>Walkway Pad</b>	<b>Detail # PVC-1.34</b>	<b>(PVC) Systems</b>	1/03
--------------------	--------------------------	----------------------	------

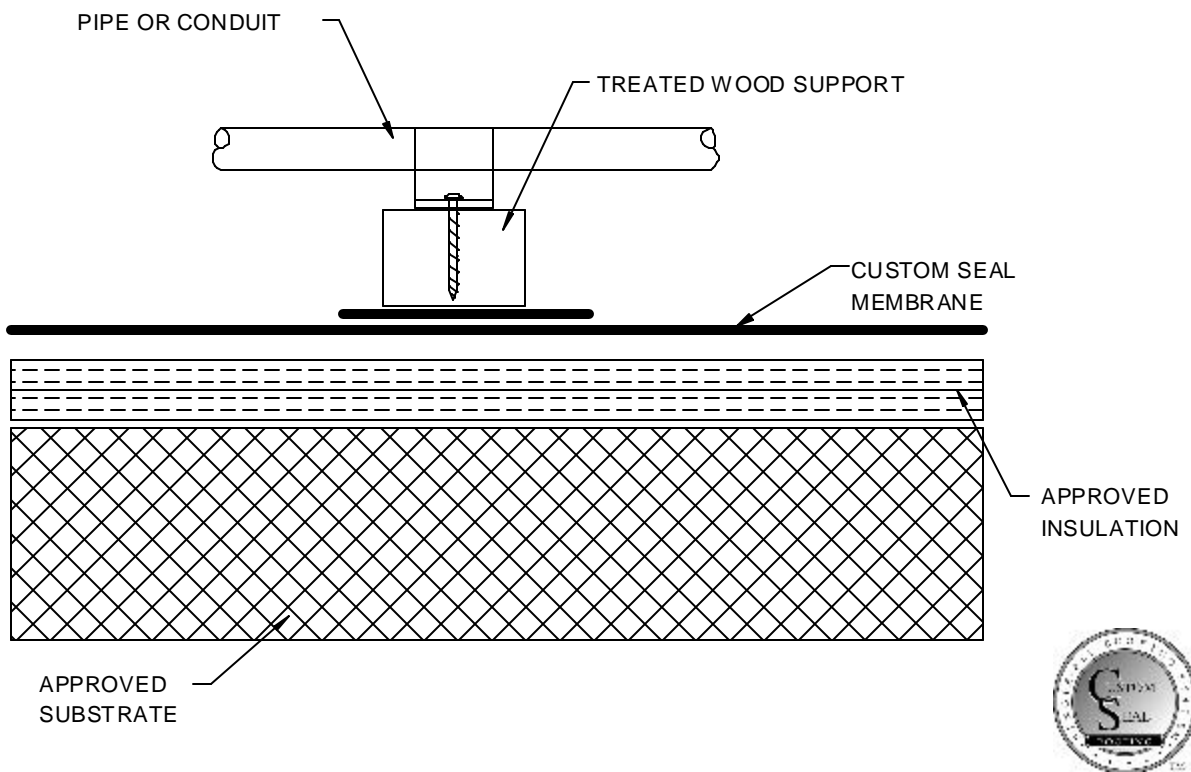


**Concrete Walkway Paver**

**Detail # PVC-1.35**

**(PVC) Systems**

1/03

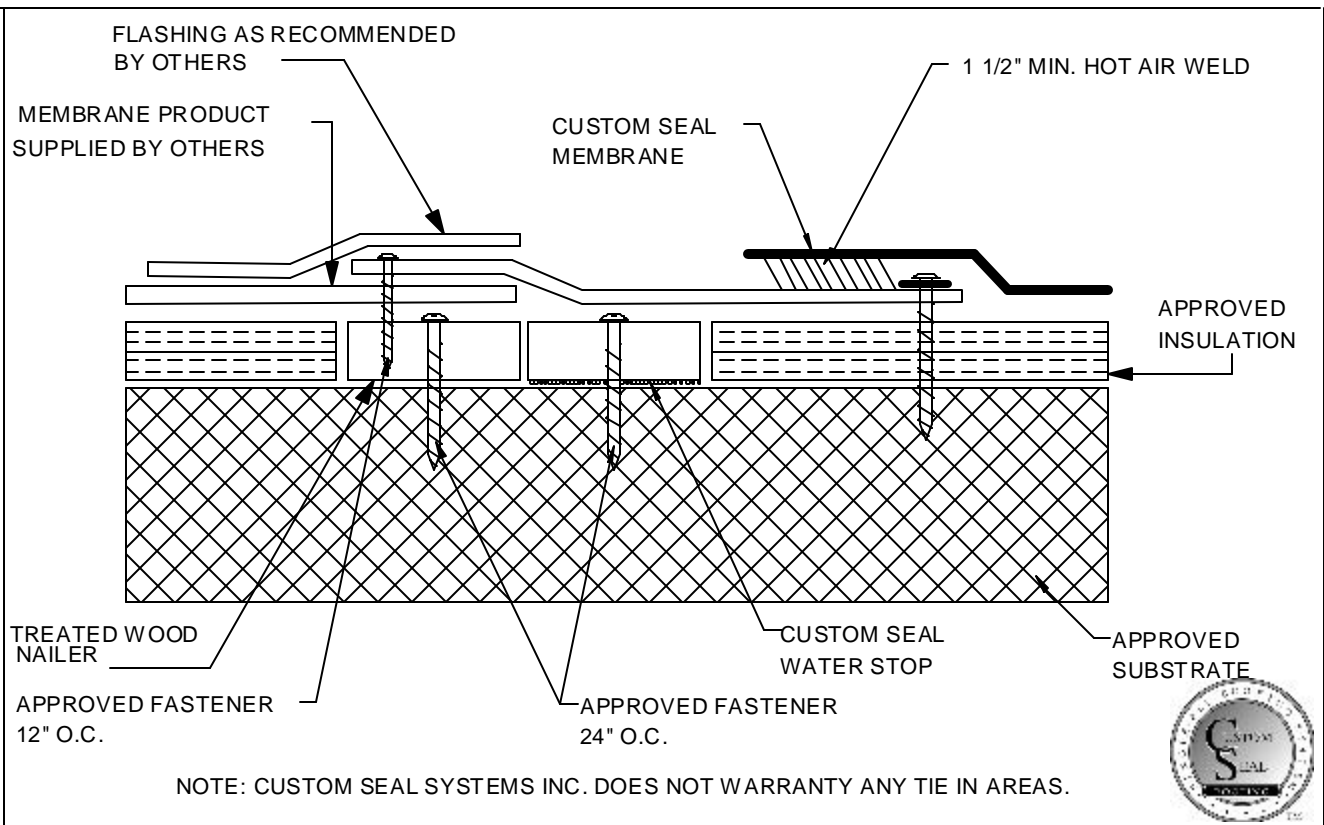


**Pipe Support**

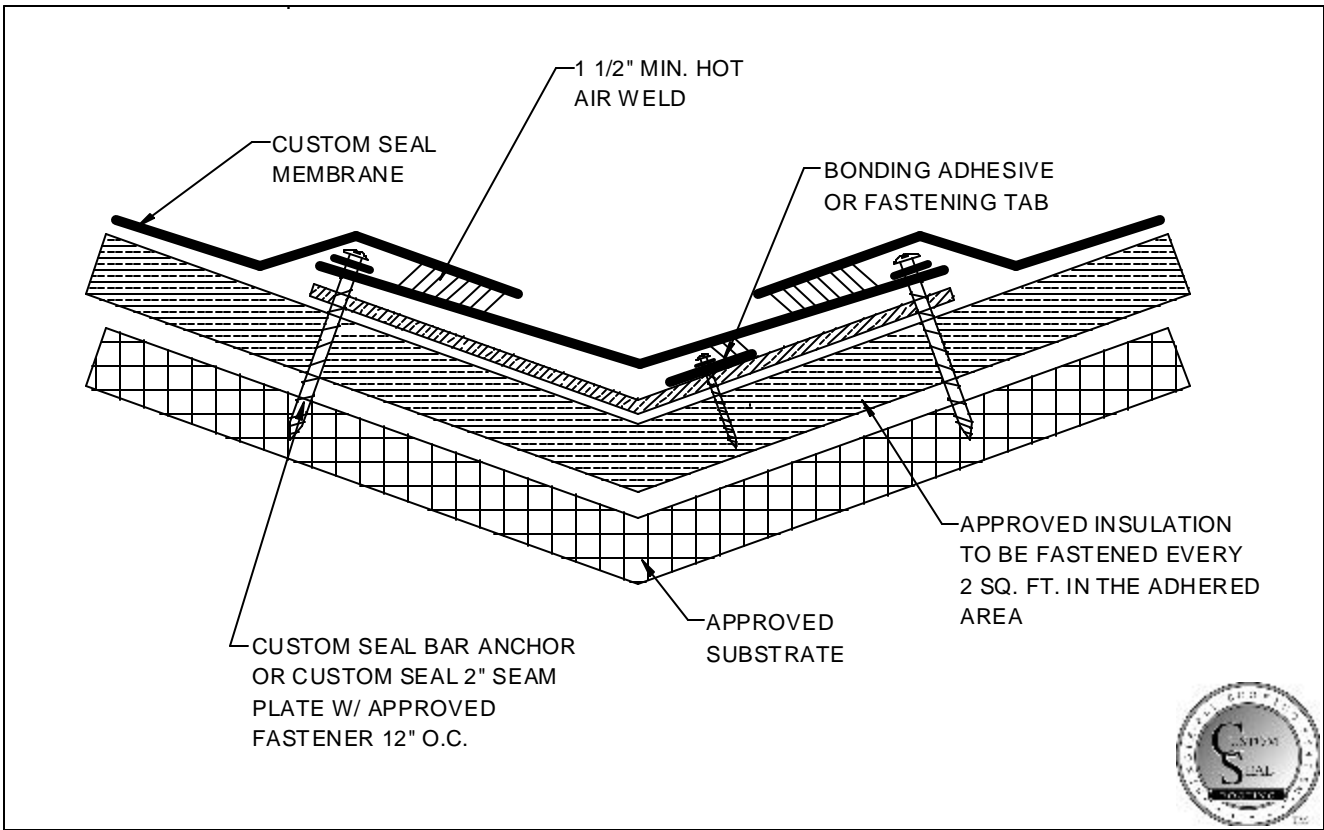
**Detail # PVC-1.36**

**(PVC) Systems**

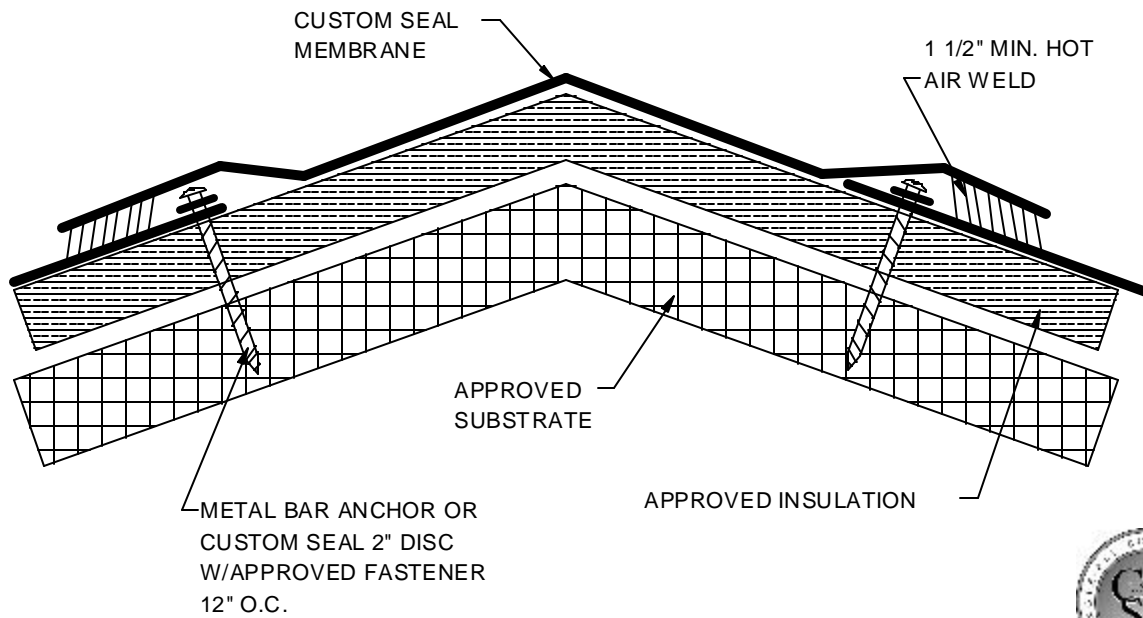
1/03



<b>System Tie-In</b>	<b>Detail # PVC-1.37</b>	<b>(PVC) Systems</b>	1/03
----------------------	--------------------------	----------------------	------



<b>Valley Tie-In</b>	<b>Detail # PVC-1.38</b>	<b>(PVC) Systems</b>	1/03
----------------------	--------------------------	----------------------	------



NOTE: DESIGN FOR USE ON BUILDING UP TO 50'-0" IN HEIGHT

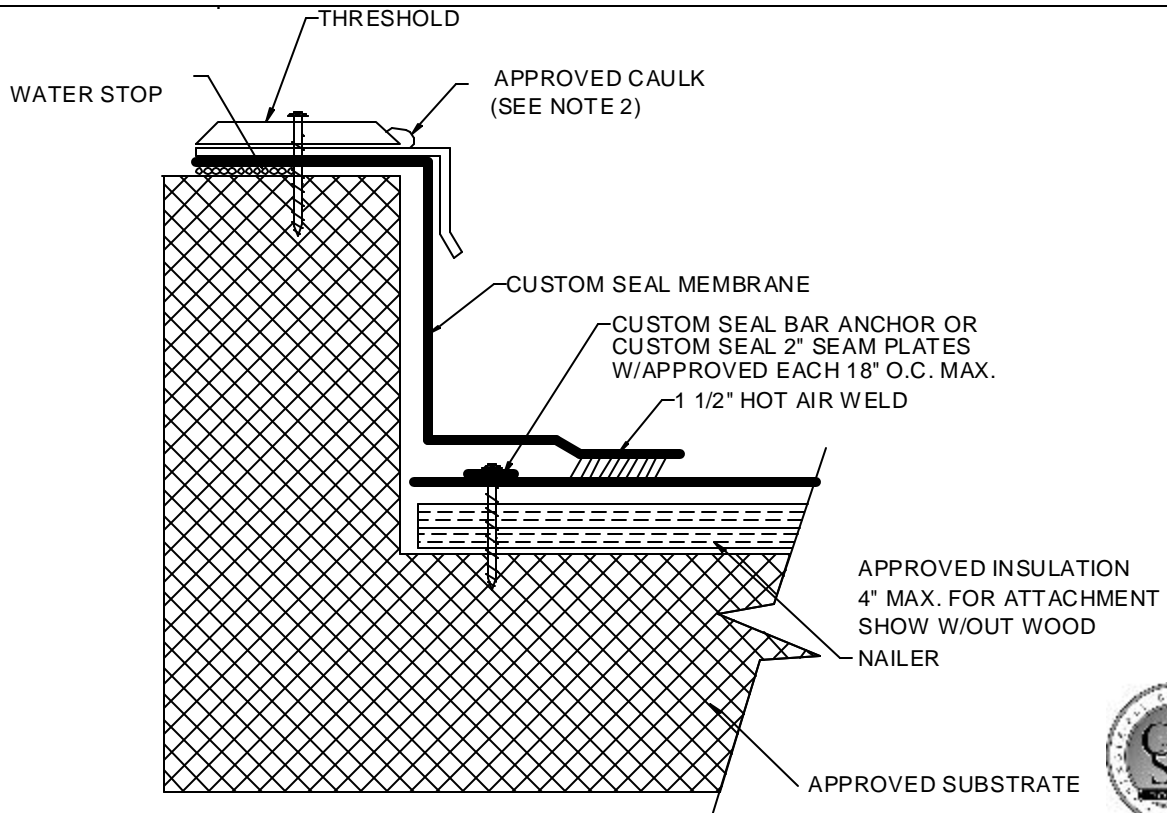


**System Tie-In**

**Detail # PVC-1.39**

**(PVC) Systems**

1/03

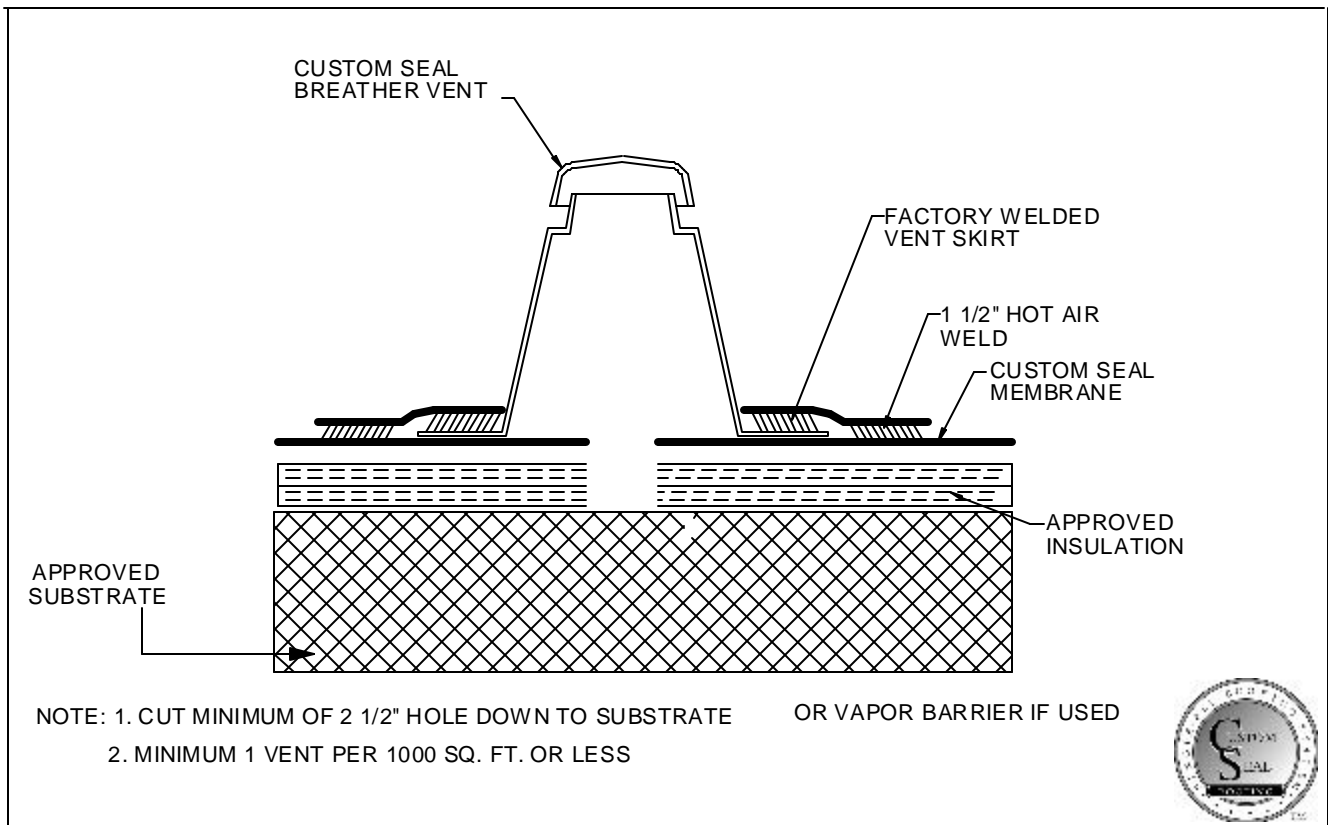


**Threshold Termination**

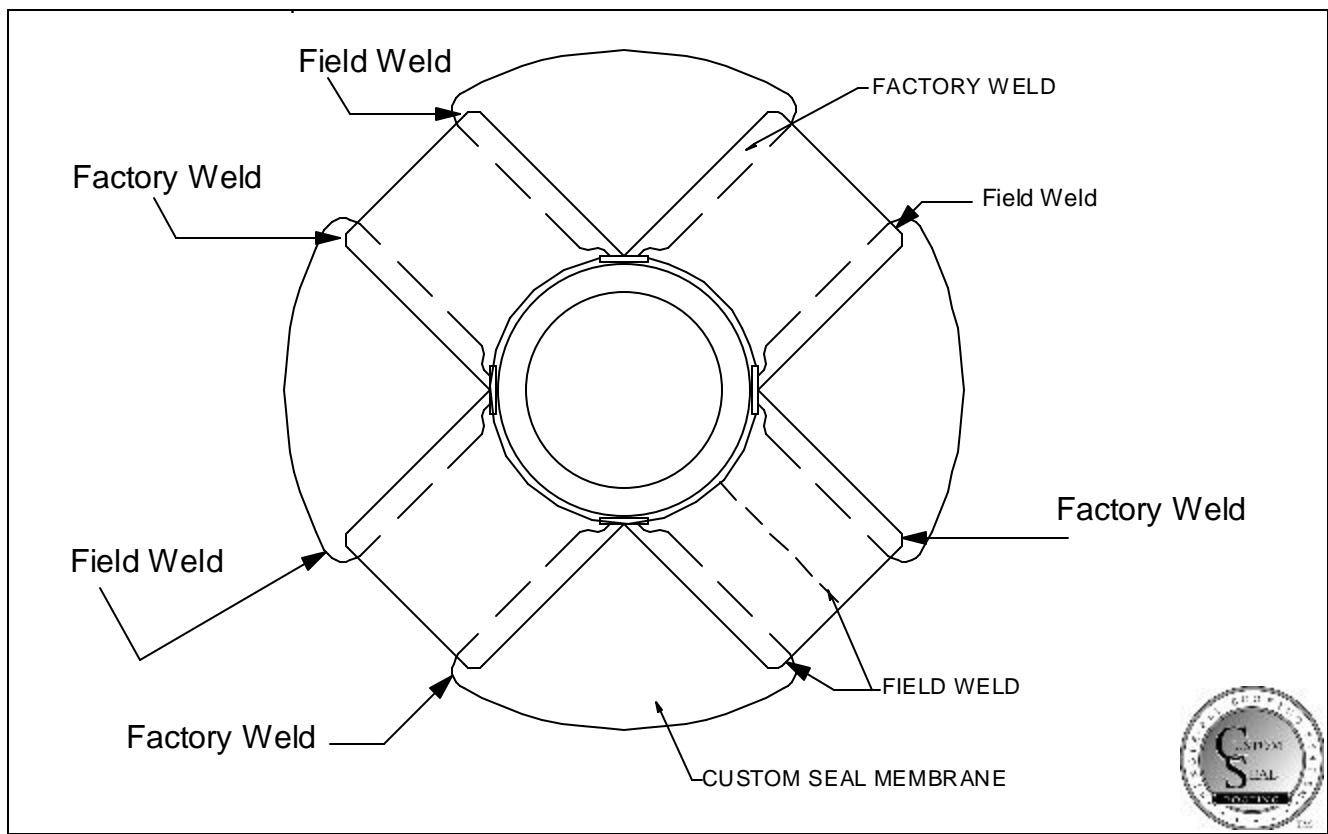
**Detail # PVC-1.40**

**(PVC) Systems**

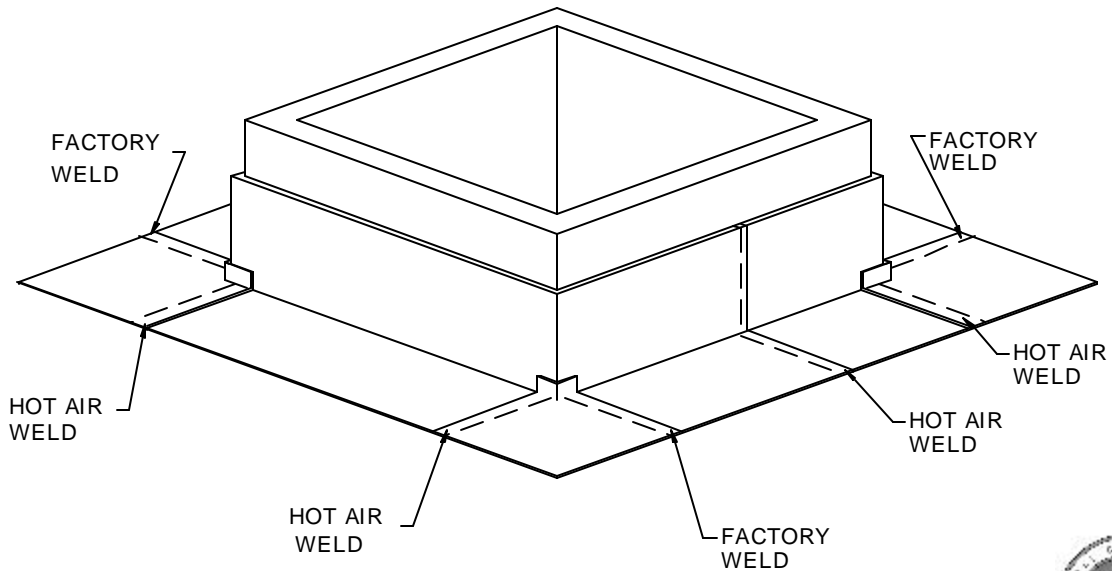
1/03



<b>Custom Seal Two Way Breather Vent</b>	<b>Detail # PVC-1.41</b>	<b>(PVC) Systems</b>	1/03
--	--------------------------	----------------------	------



<b>Pre-Fab 12" Or Larger Stack Flashing</b>	<b>Detail # PVC-1.42</b>	<b>(PVC) Systems</b>	1/03
---	--------------------------	----------------------	------



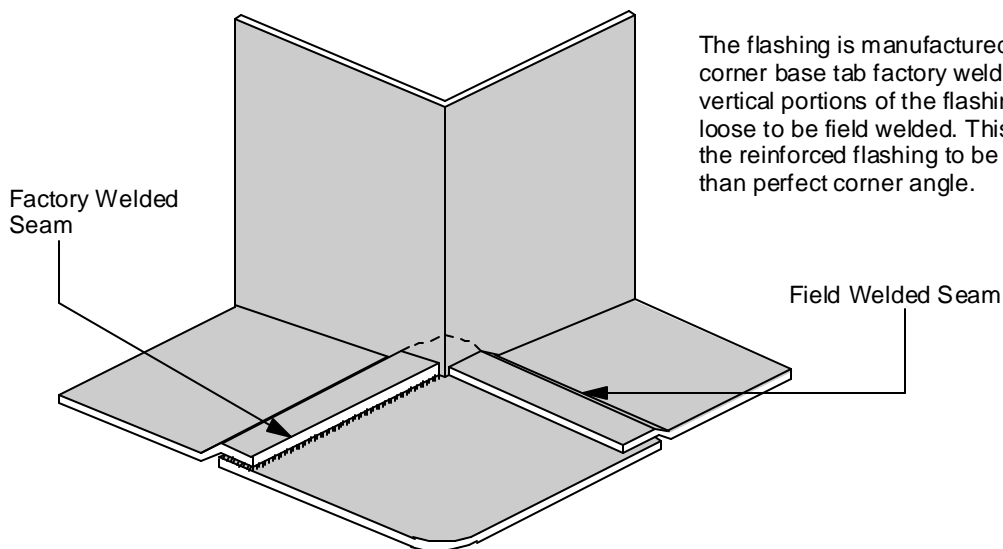
**Custom Seal Pre-Fab  
Curb Flashing**

**Detail # PVC 1-43**

**(PVC) Systems**

1/03

**Custom Seal Reinforced Outside Corner Flashing**



The flashing is manufactured with one side of the corner base tab factory welded to the deck and vertical portions of the flashing and one side loose to be field welded. This configuration allows the reinforced flashing to be adaptive to a less than perfect corner angle.

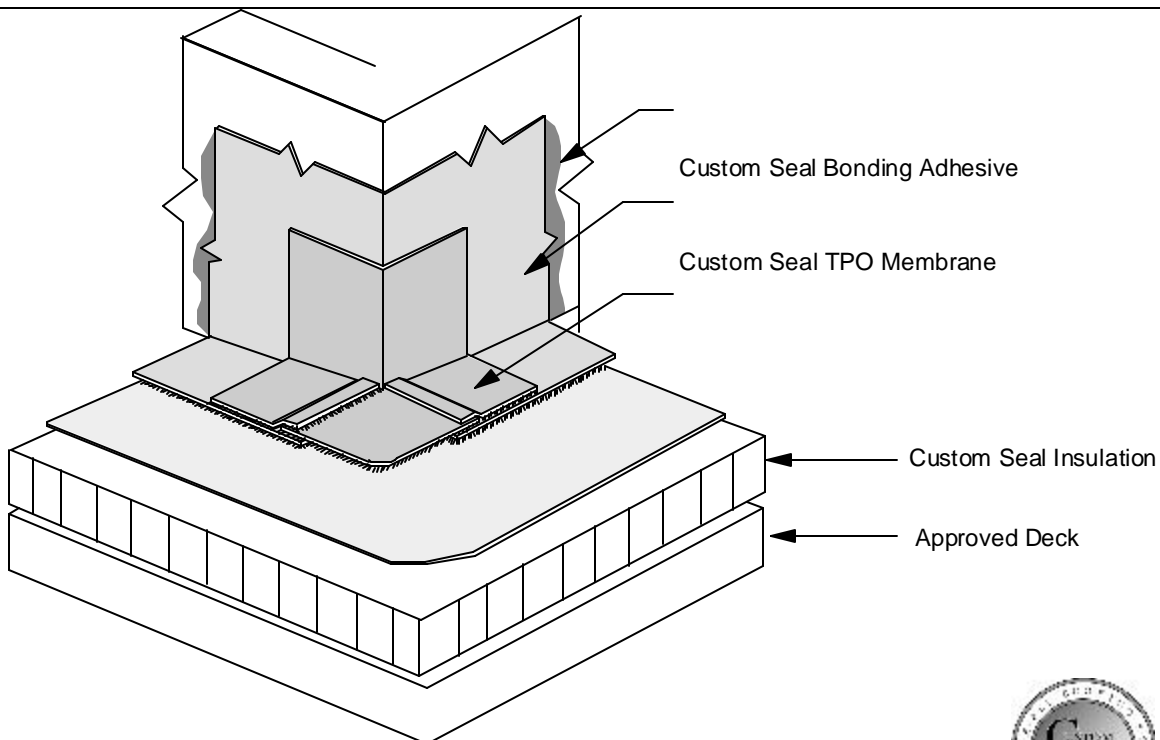


**Pre-Fab Outside Corner**

**Detail # PVC-1.44**

**(PVC) Systems**

1/03



Custom Seal Reinforced Outside Corner Flashing

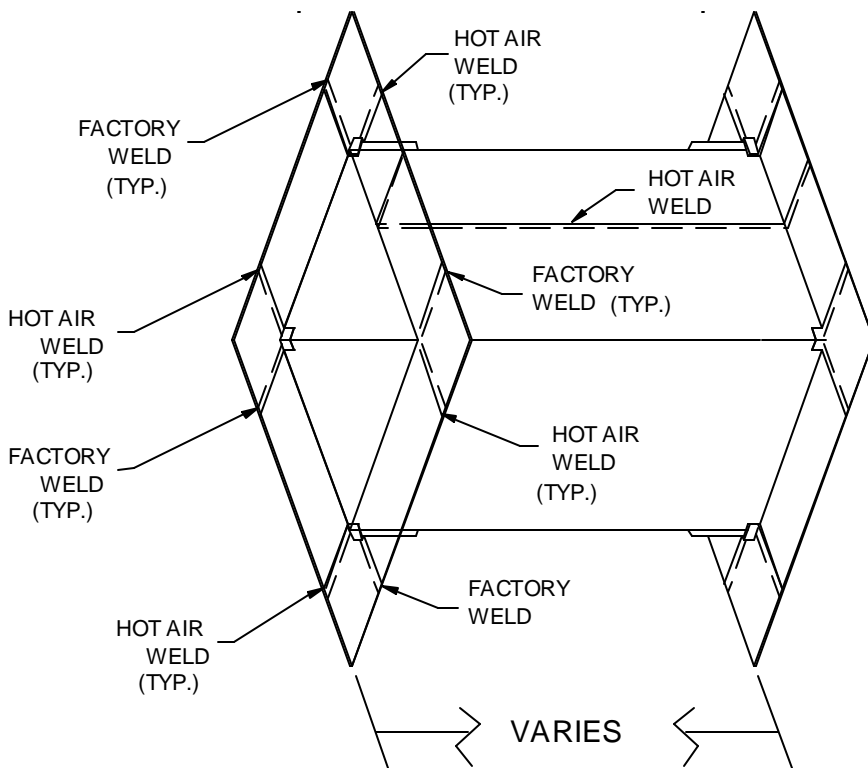


**Custom Seal Pre-Fab  
Outside Corner**

**Detail # PVC 1.-45**

**(PVC) Systems**

1/03

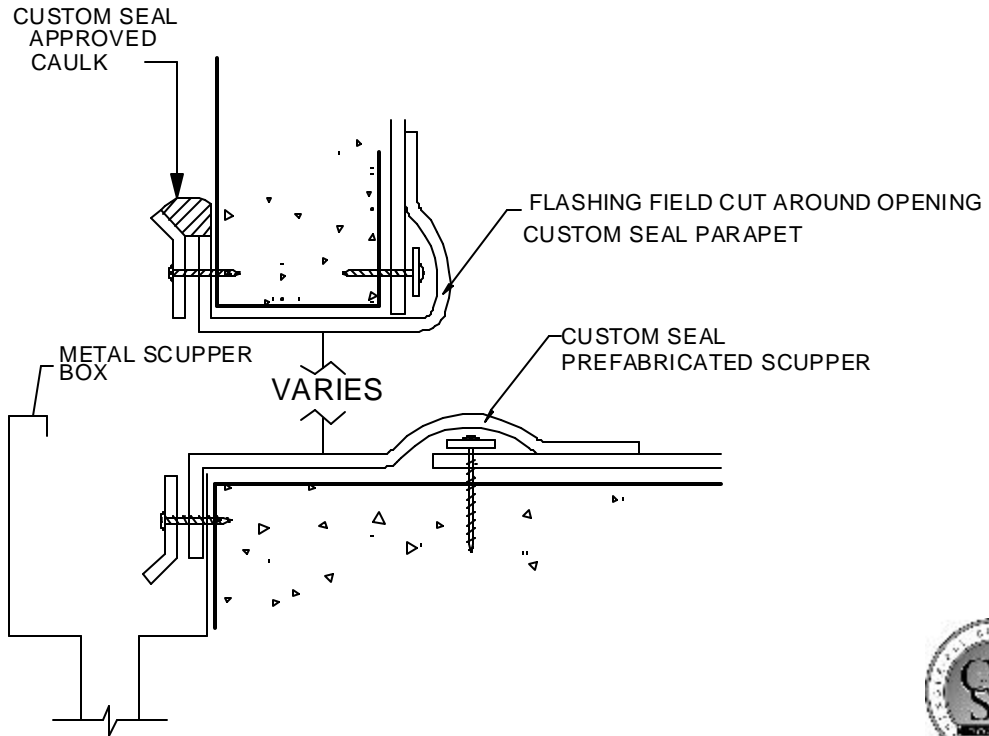


**Pre-Fab Scupper View 1**

**Detail # PVC-1.46**

**(PVC) Systems**

1/03

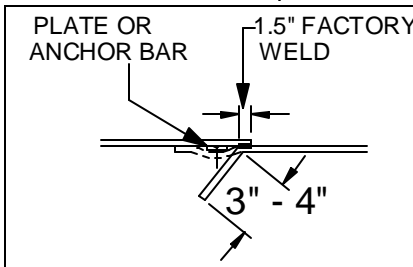


**Custom Seal Pre-Fab  
Supper View 2**

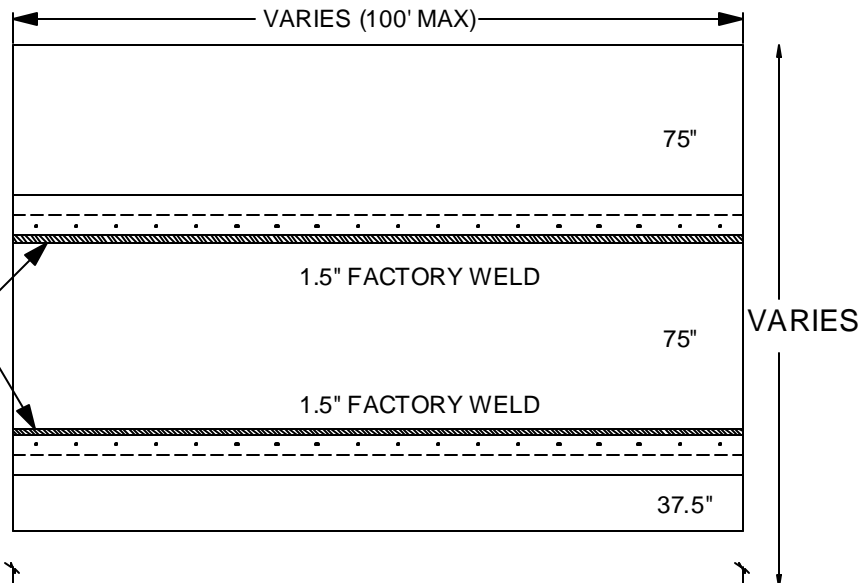
**Detail # PVC 1-47**

**(PVC) Systems**

1/03



FASTENING OVERLAP  
TOP OR BOTTOM

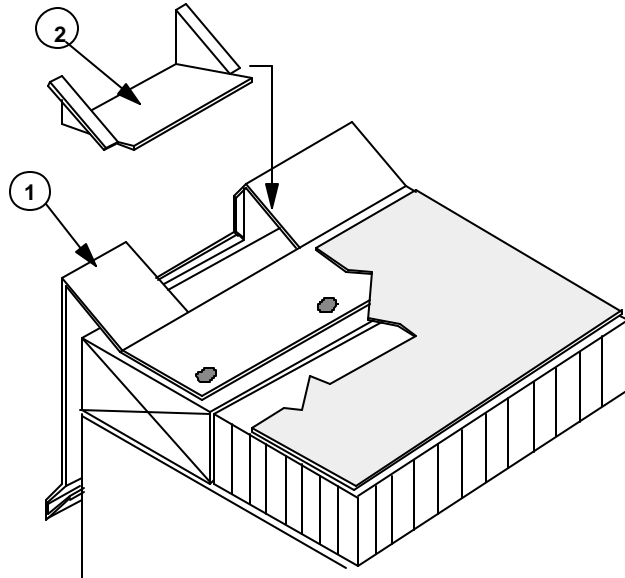


**Typical Factory Pre-Fab  
Panel - Detail**

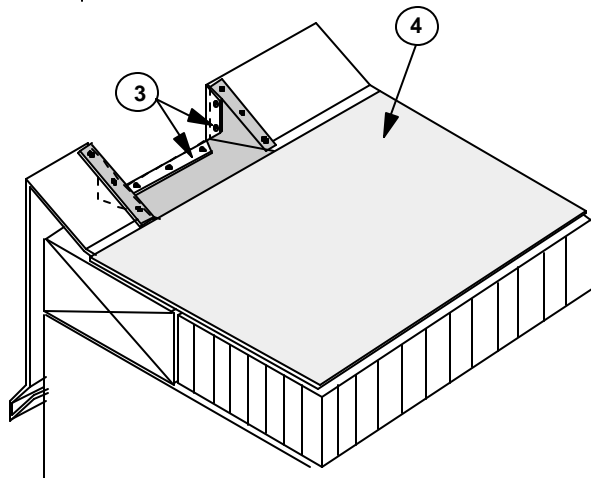
**Detail # PVC 1-48**

**(PVC) Systems**

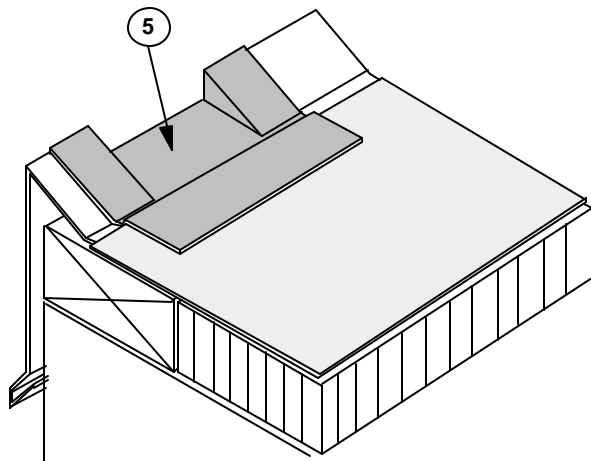
1/03



1. Cut opening into gravel stop fascia and dam leaving 1" minimum tabs on the 3 sides of the fascia that will connect with scupper sleeve.
2. Fabricate sleeve to fit opening.



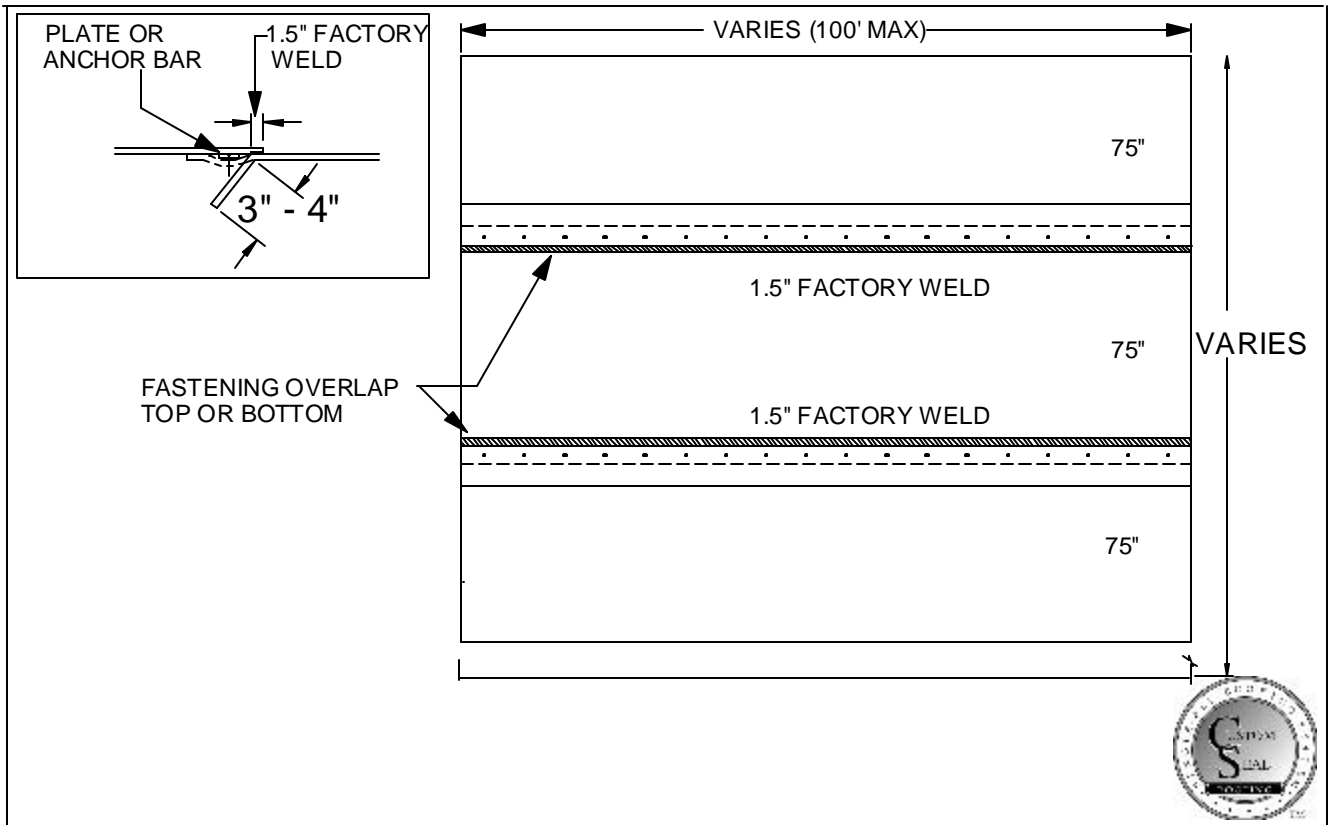
3. Set tabs of sleeve in a bead of approved sealant onto the gravel stop / fascia and bend fascia tabs into the front of the sleeve into another bead of approved sealant and pop rivet into place as shown. Fabrication and assembly are to comply with SMACNA recommendations.
4. Strip in gravel stop flange according to system specification with the deck sheet.



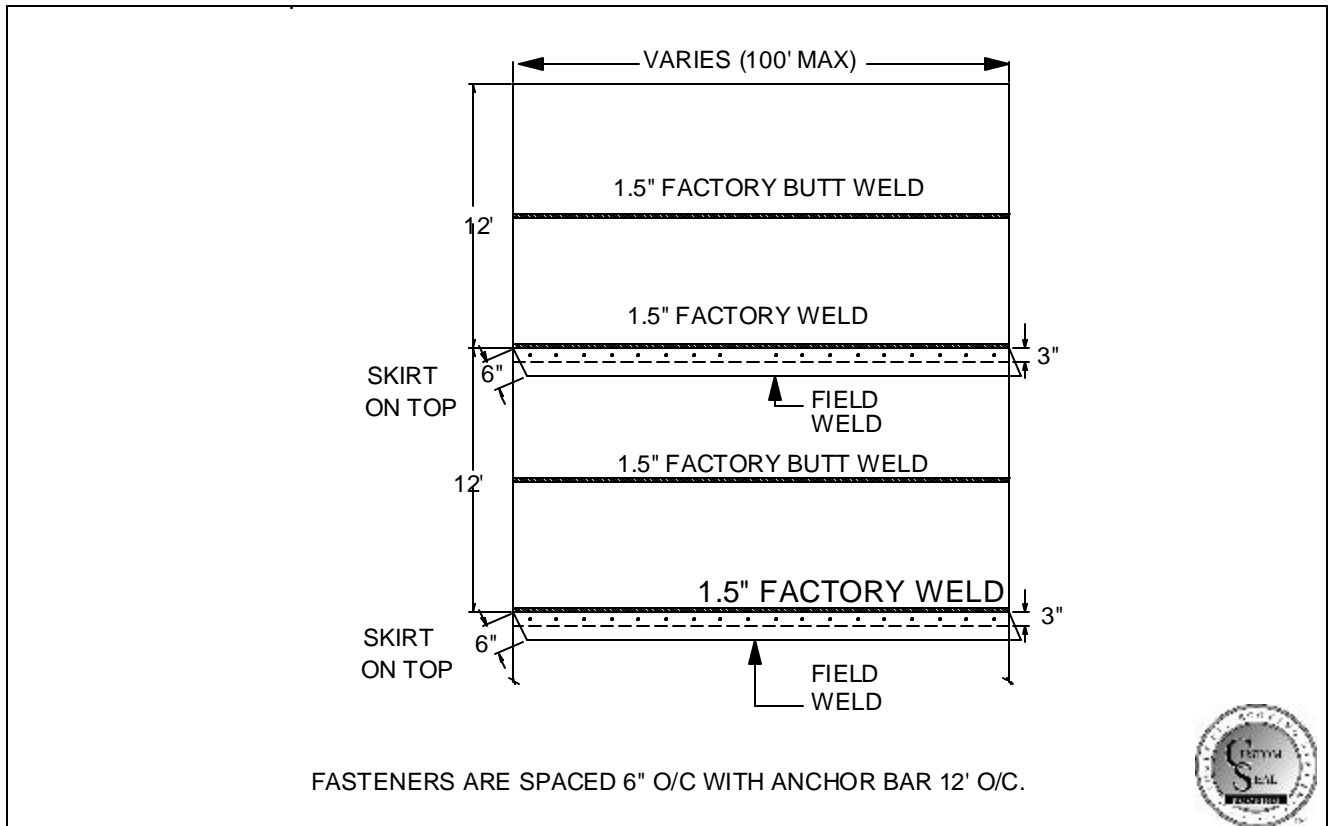
5. Flash sleeve with unsupported flashing.
6. Treat metal joints in accordance with detail R-14.09.

Refer to appropriate edge detail for metal edge requirements - the focus of this detail is the fabrication of a gravelstop scupper.

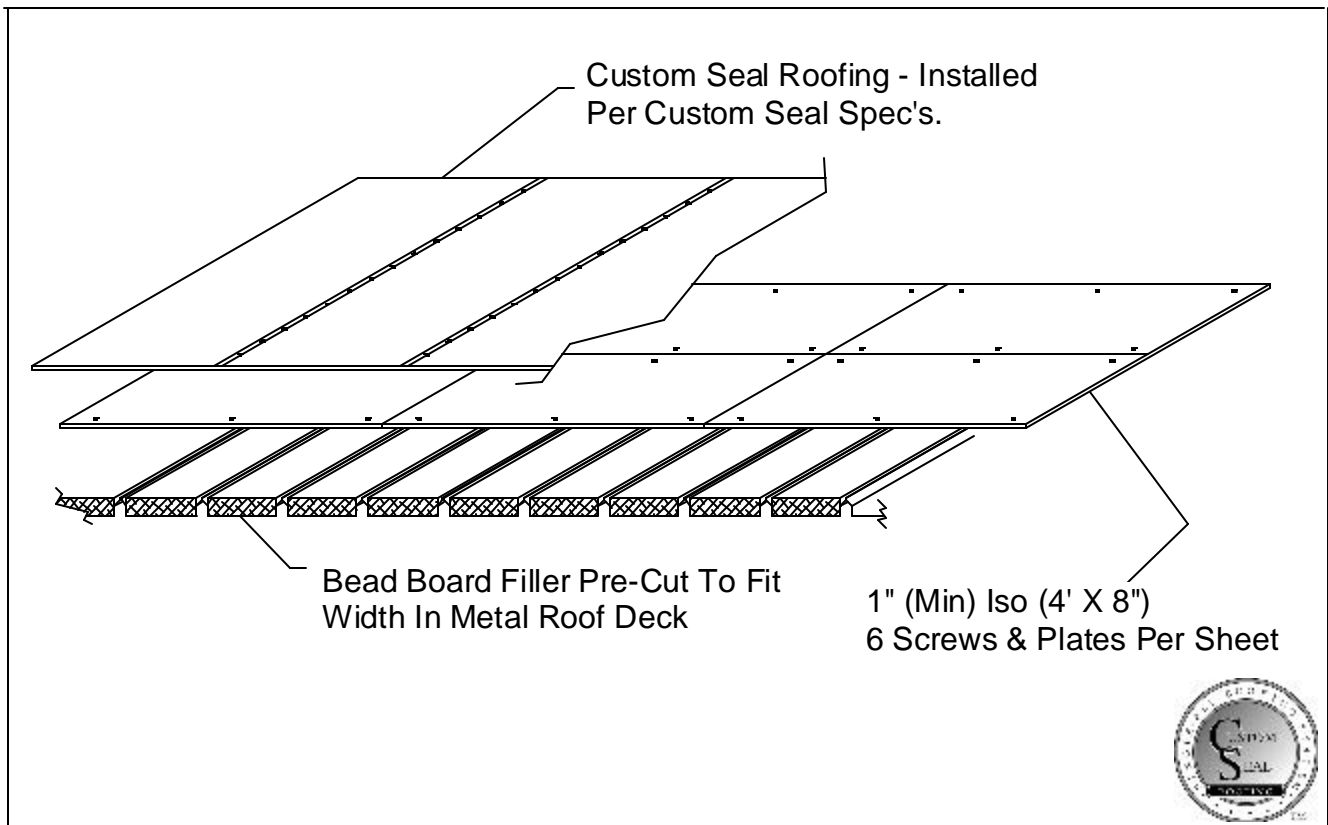




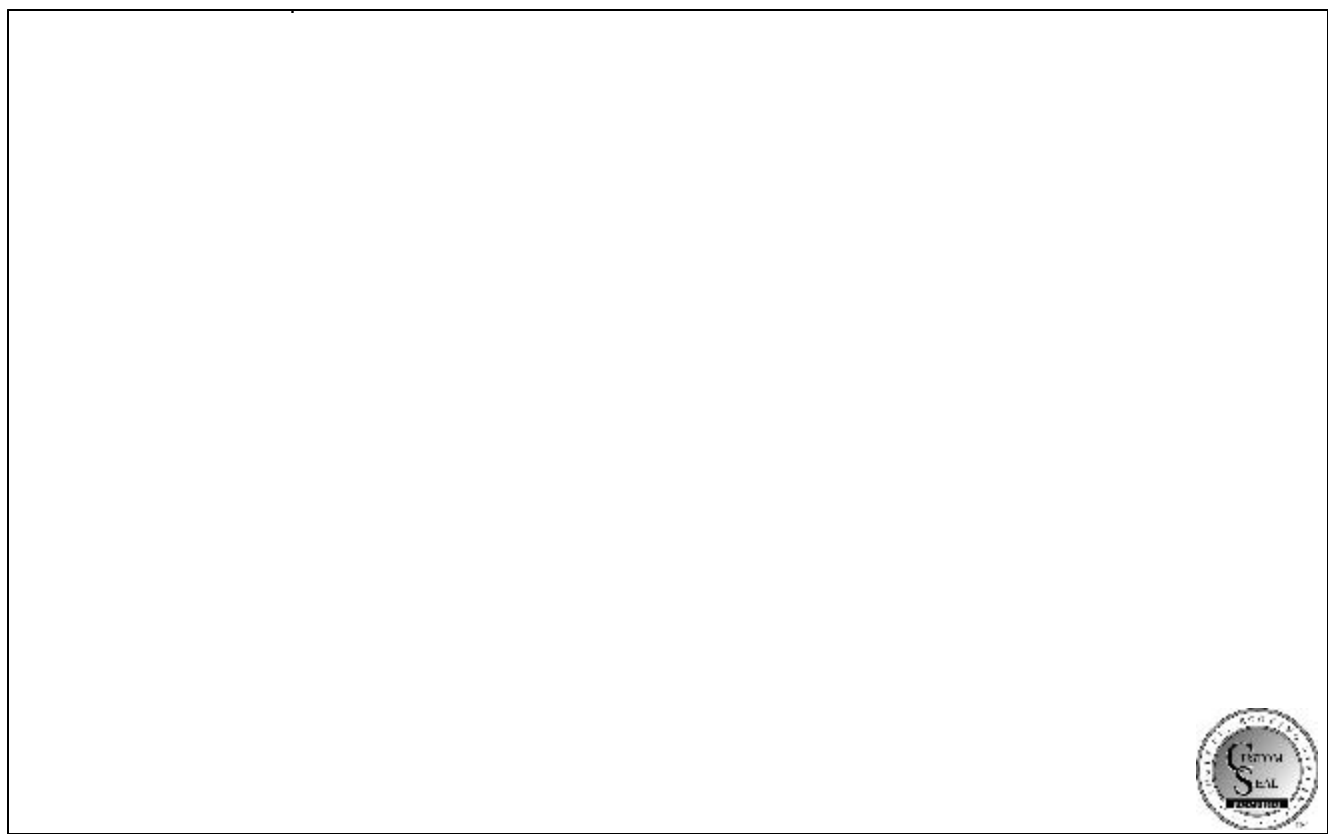
<p><b>Typical Factory Pre-Fab Panel - Detail</b></p>	<p><b>Detail # PVC 1-49</b></p>	<p><b>(PVC) Systems</b></p> <p>1/03</p>
--	---------------------------------	---



<p><b>12'6" Tab System Or 24'6" Tab System</b></p>	<p><b>Detail # PVC 1-50</b></p>	<p><b>(PVC) Systems</b></p> <p>1/03</p>
--	---------------------------------	---



<b>Custom Seal Membrane Re-Roof Over Standing Seam Metal Roof</b>	<b>Detail # PVC 1-51</b>	<b>(PVC) Systems</b>	1/03
---	--------------------------	----------------------	------



		<b>(PVC) Systems</b>	1/03
--	--	----------------------	------

